

CAB14890

Product Information

Size:

20uL, 50uL, 100uL, 200uL

Observed MW:

134kDa

Calculated MW:

55kDa/128kDa/134kDa

Applications:

WB IF

Reactivity:

Human, Mouse

Antibody Information

Recommended dilutions:

WB 1:500 - 1:2000 IF 1:50 - 1:200

Source:

Rabbit

Isotype:

IgG

Purification:

Affinity purification

Protein Background

This gene encodes a cytosolic leucine-tRNA synthetase, a member of the class I aminoacyl-tRNA synthetase family. The encoded enzyme catalyzes the ATP-dependent ligation of L-leucine to tRNA(Leu). It is found in the cytoplasm as part of a multisynthetase complex and interacts with the arginine tRNA synthetase through its C-terminal domain. A mutation in this gene was found in affected individuals with infantile liver failure syndrome 1. Alternatively spliced transcript variants of this gene have been observed.

Immunogen information

Gene ID:

51520

Uniprot

Q9P2J5

Synonyms:

LARS; HSPC192; ILFS1; LARS1; LEURS; LEUS; LFIS; LRS; PIG44; RNTLS; hr025CI

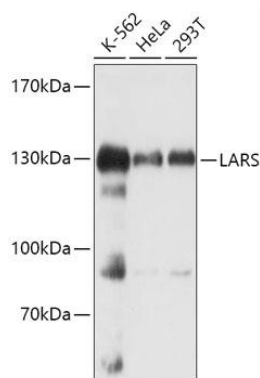
Immunogen:

Recombinant fusion protein containing a sequence corresponding to amino acids 1-270 of human LARS (NP_064502.9).

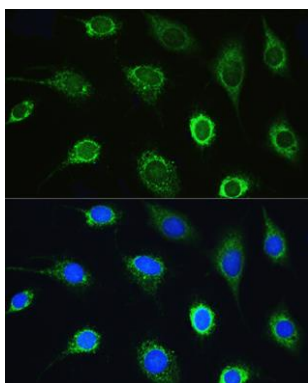
Storage:

Store at -20°C. Avoid freeze / thaw cycles. Buffer: PBS with 0.02% sodium azide, 50% glycerol, pH7.3.

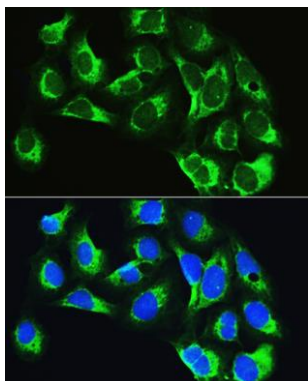
Product Images



Western blot analysis of extracts of various cell lines, using LARS antibody (CAB14890) at 1:1000 dilution. Secondary antibody: HRP Goat Anti-Rabbit IgG (H+L) (CABS014) at 1:10000 dilution. Lysates/proteins: 25ug per lane. Blocking buffer: 3% nonfat dry milk in TBST. Detection: ECL Basic Kit (CABM00020). Exposure time: 60s.



Immunofluorescence analysis of L929 cells using LARS Rabbit pAb (CAB14890) at dilution of 1:100. Blue: DAPI for nuclear staining.



Immunofluorescence analysis of U2OS cells using LARS Rabbit pAb (CAB14890) at dilution of 1:100. Blue: DAPI for nuclear staining.