

**[KO Validated] CHRAC1 Rabbit Polyclonal
Antibody
CAB14896**



Product Information

Size:

20uL, 50uL, 100uL, 200uL

Observed MW:

14kDa

Calculated MW:

14kDa

Applications:

WB IHC

Reactivity:

Human, Mouse, Rat

Antibody Information

Recommended dilutions:

WB 1:500 - 1:2000 IHC 1:50
- 1:200

Source:

Rabbit

Isotype:

IgG

Purification:

Affinity purification

Protein Background

Immunogen information

Gene ID:

54108

Uniprot

Q9NRG0

Synonyms:

CHRAC1; CHARC1; CHARC15; CHRAC-1; CHRAC-15; CHRAC15;
YCL1

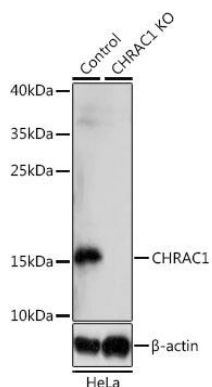
Immunogen:

Recombinant fusion protein containing a sequence corresponding
to amino acids 1-131 of human CHRAC1 (NP_059140.1).

Storage:

Store at -20°C. Avoid freeze / thaw cycles. Buffer: PBS with 0.02%
sodium azide, 50% glycerol, pH7.3.

Product Images



Western blot analysis of extracts from normal (control) and CHRAC1 knockout (KO) HeLa cells, using CHRAC1 antibody (CAB14896) at 1:1000 dilution. Secondary antibody: HRP Goat Anti-Rabbit IgG (H+L) (CABS014) at 1:10000 dilution. Lysates/proteins: 25ug per lane. Blocking buffer: 3% nonfat dry milk in TBST. Detection: ECL Basic Kit (CABM00020). Exposure time: 15s.