

# LINS1 Rabbit Polyclonal Antibody



CAB14903

## Product Information

### Size:

20uL, 50uL, 100uL, 200uL

### Observed MW:

86kDa

### Calculated MW:

55kDa/85kDa

### Applications:

WB

### Reactivity:

Mouse, Rat

## Antibody Information

### Recommended dilutions:

WB 1:500 - 1:2000

### Source:

Rabbit

### Isotype:

IgG

### Purification:

Affinity purification

## Protein Background

The Drosophila segment polarity gene *lin* encodes a protein, *lines*, which plays important roles in development of the epidermis and hindgut. This gene encodes a protein containing a *lines*-like domain. This gene is located on chromosome 15 and clustered with the gene encoding ankyrin repeat and SOCS box-containing protein 7. Alternative splicing results in multiple transcript variants.

## Immunogen information

### Gene ID:

72635

### Uniprot

### Synonyms:

LINS1; LINS; MRT27; WINS1

### Immunogen:

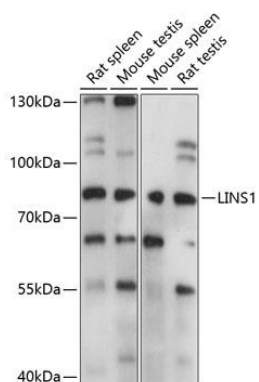
A synthetic peptide corresponding to a sequence within amino acids 1-100 of mouse LINS1 (NP\_690028.2).

### Storage:

Store at -20°C. Avoid freeze / thaw cycles. Buffer: PBS with 0.02% sodium azide, 50% glycerol, pH7.3.

## Product Images

---



Western blot analysis of extracts of various cell lines, using LINS1 antibody (CAB14903) at 1:1000 dilution. Secondary antibody: HRP Goat Anti-Rabbit IgG (H+L) (CABS014) at 1:10000 dilution. Lysates/proteins: 25ug per lane. Blocking buffer: 3% nonfat dry milk in TBST. Detection: ECL Basic Kit (CABM00020). Exposure time: 1s.