

ZNF416 Rabbit Polyclonal Antibody



CAB14910

Product Information

Size:

20uL, 50uL, 100uL, 200uL

Observed MW:

Calculated MW:

67kDa

Applications:

IHC IF

Reactivity:

Human, Mouse, Rat

Antibody Information

Recommended dilutions:

IHC 1:50 - 1:200 IF 1:50 - 1:200

Source:

Rabbit

Isotype:

IgG

Purification:

Affinity purification

Protein Background

Immunogen information

Gene ID:

55659

Uniprot

Q9BWM5

Synonyms:

ZNF416

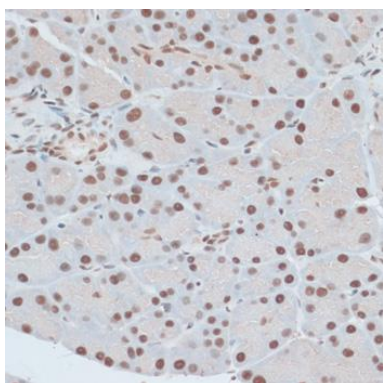
Immunogen:

Recombinant fusion protein containing a sequence corresponding to amino acids 495-594 of human ZNF416 (NP_060349.1).

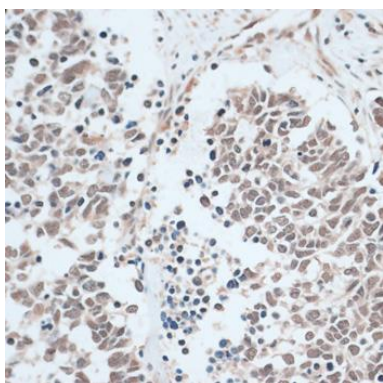
Storage:

Store at -20°C. Avoid freeze / thaw cycles. Buffer: PBS with 0.02% sodium azide, 50% glycerol, pH7.3.

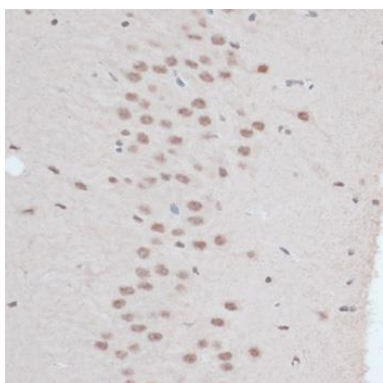
Product Images



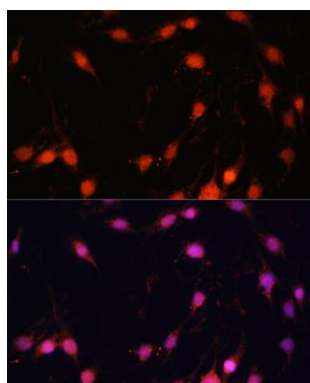
Immunohistochemistry of paraffin-embedded rat pancreas using ZNF416 antibody (CAB14910) at dilution of 1:100 (40x lens).



Immunohistochemistry of paraffin-embedded human lung cancer using ZNF416 antibody (CAB14910) at dilution of 1:100 (40x lens).



Immunohistochemistry of paraffin-embedded mouse brain using ZNF416 antibody (CAB14910) at dilution of 1:100 (40x lens).



Immunofluorescence analysis of C6 cells using ZNF416 antibody (CAB14910) at dilution of 1:100. Blue: DAPI for nuclear staining.