

ZNF446 Rabbit Polyclonal Antibody



CAB14912

Product Information

Size:

20uL, 50uL, 100uL, 200uL

Observed MW:

Calculated MW:

45kDa/48kDa

Applications:

IHC IF

Reactivity:

Human, Mouse, Rat

Antibody Information

Recommended dilutions:

IHC 1:50 - 1:200 IF 1:50 - 1:200

Source:

Rabbit

Isotype:

IgG

Purification:

Affinity purification

Protein Background

Immunogen information

Gene ID:

55663

Uniprot

Q9NWS9

Synonyms:

ZNF446; ZKSCAN20; ZSCAN30; ZSCAN52

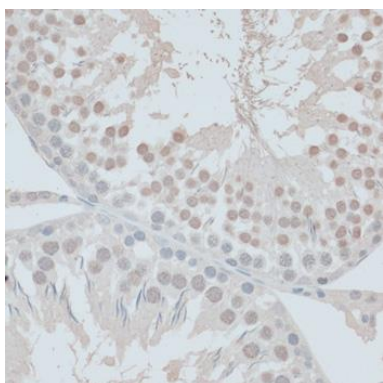
Immunogen:

Recombinant fusion protein containing a sequence corresponding to amino acids 1-270 of human ZNF446 (NP_060378.1).

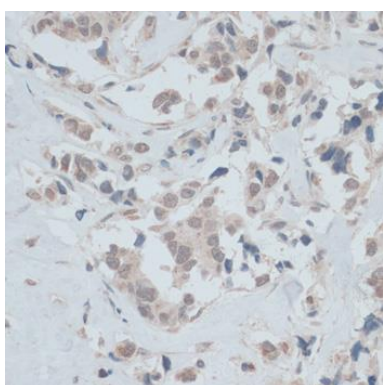
Storage:

Store at -20°C. Avoid freeze / thaw cycles. Buffer: PBS with 0.02% sodium azide, 50% glycerol, pH7.3.

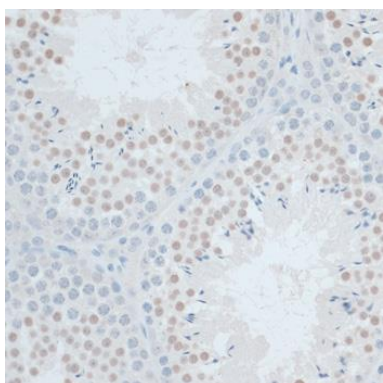
Product Images



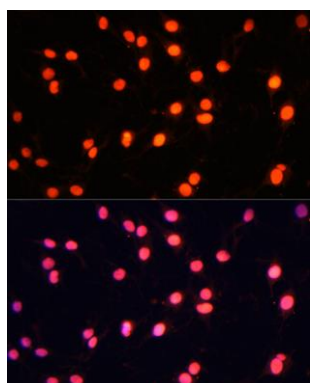
Immunohistochemistry of paraffin-embedded rat testis using ZNF446 antibody (CAB14912) at dilution of 1:100 (40x lens).



Immunohistochemistry of paraffin-embedded human breast cancer using ZNF446 antibody (CAB14912) at dilution of 1:100 (40x lens).



Immunohistochemistry of paraffin-embedded mouse testis using ZNF446 antibody (CAB14912) at dilution of 1:100 (40x lens).



Immunofluorescence analysis of C6 cells using ZNF446 antibody (CAB14912) at dilution of 1:100. Blue: DAPI for nuclear staining.