

ZNF415 Rabbit Polyclonal Antibody



CAB14913

Product Information

Size:

20uL, 50uL, 100uL, 200uL

Observed MW:

Refer to figures

Calculated MW:

37kDa/62kDa/64kDa/68kDa

Applications:

WB IHC

Reactivity:

Human, Mouse, Rat

Antibody Information

Recommended dilutions:

WB 1:500 - 1:2000 IHC 1:50
- 1:200

Source:

Rabbit

Isotype:

IgG

Purification:

Affinity purification

Protein Background

Immunogen information

Gene ID:

55786

Uniprot

Q09FC8

Synonyms:

ZNF415; ZfLp

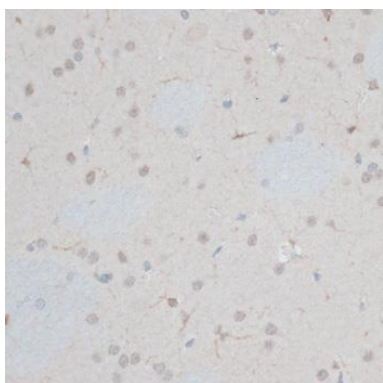
Immunogen:

Recombinant fusion protein containing a sequence corresponding to amino acids 100-260 of human ZNF415 (NP_060825.2).

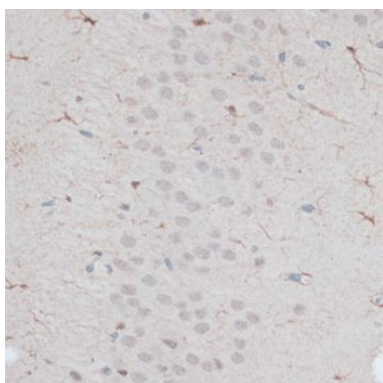
Storage:

Store at -20°C. Avoid freeze / thaw cycles. Buffer: PBS with 0.02% sodium azide, 50% glycerol, pH7.3.

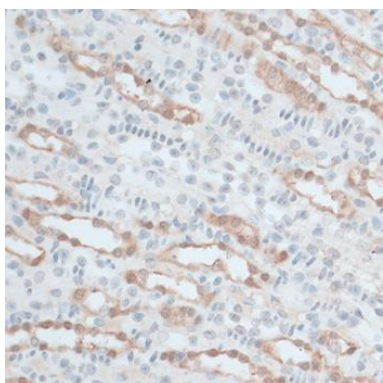
Product Images



Immunohistochemistry of paraffin-embedded rat brain using ZNF415 antibody (CAB14913) at dilution of 1:100 (40x lens).



Immunohistochemistry of paraffin-embedded mouse brain using ZNF415 antibody (CAB14913) at dilution of 1:100 (40x lens).



Immunohistochemistry of paraffin-embedded mouse kidney using ZNF415 antibody (CAB14913) at dilution of 1:100 (40x lens).