

# ZNF574 Rabbit Polyclonal Antibody



CAB14923

---

## Product Information

### Size:

20uL, 50uL, 100uL, 200uL

### Observed MW:

### Calculated MW:

98kDa/108kDa

### Applications:

IHC IF

### Reactivity:

Human, Mouse, Rat

## Antibody Information

### Recommended dilutions:

IHC 1:50 - 1:200 IF 1:50 - 1:200

### Source:

Rabbit

### Isotype:

IgG

### Purification:

Affinity purification

## Protein Background

### Immunogen information

#### Gene ID:

64763

#### Uniprot

Q6ZN55

#### Synonyms:

ZNF574; FP972

#### Immunogen:

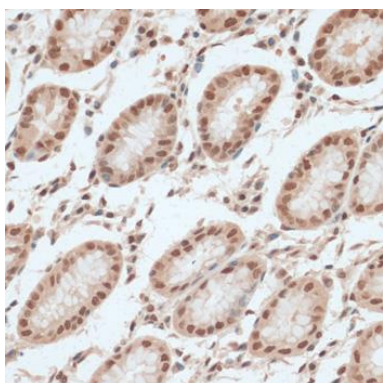
Recombinant fusion protein containing a sequence corresponding to amino acids 170-310 of human ZNF574 (NP\_073589.4).

#### Storage:

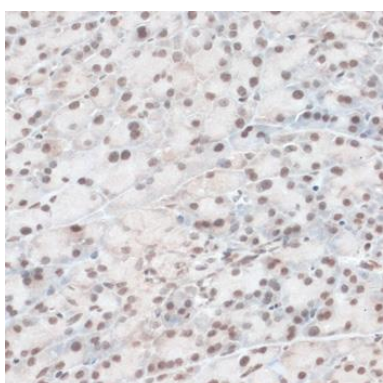
Store at -20°C. Avoid freeze / thaw cycles. Buffer: PBS with 0.02% sodium azide, 50% glycerol, pH7.3.

## Product Images

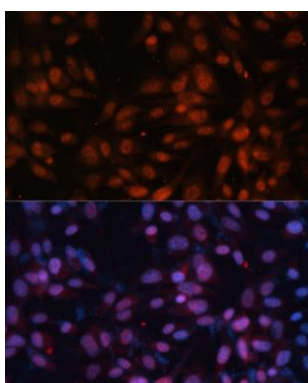
---



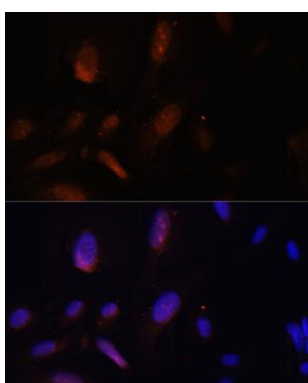
Immunohistochemistry of paraffin-embedded human stomach using ZNF574 antibody (CAB14923) at dilution of 1:100 (40x lens).



Immunohistochemistry of paraffin-embedded mouse pancreas using ZNF574 antibody (CAB14923) at dilution of 1:100 (40x lens).



Immunofluorescence analysis of NIH-3T3 cells using ZNF574 antibody (CAB14923) at dilution of 1:100. Blue: DAPI for nuclear staining.



Immunofluorescence analysis of U-2 OS cells using ZNF574 antibody (CAB14923) at dilution of 1:100. Blue: DAPI for nuclear staining.