

PPP1R3B Rabbit Polyclonal Antibody



CAB14931

Product Information

Size:

20uL, 50uL, 100uL, 200uL

Observed MW:

33kDa

Calculated MW:

32kDa

Applications:

WB

Reactivity:

Mouse, Rat

Protein Background

This gene encodes the catalytic subunit of the serine/theonine phosphatase, protein phosphatase-1. The encoded protein is expressed in liver and skeletal muscle tissue and may be involved in regulating glycogen synthesis in these tissues. This gene may be involved in type 2 diabetes and maturity-onset diabetes of the young. Alternate splicing results in multiple transcript variants that encode the same protein.

Immunogen information

Gene ID:

79660

Uniprot

Q86XI6

Synonyms:

PPP1R3B; GL; PPP1R4; PTG

Antibody Information

Recommended dilutions:

WB 1:500 - 1:2000

Source:

Rabbit

Isotype:

IgG

Purification:

Affinity purification

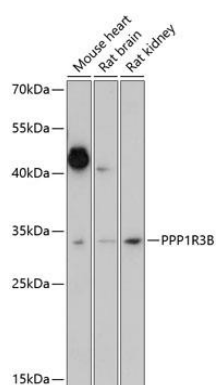
Immunogen:

Recombinant fusion protein containing a sequence corresponding to amino acids 1-140 of human PPP1R3B (NP_078883.2).

Storage:

Store at -20°C. Avoid freeze / thaw cycles. Buffer: PBS with 0.02% sodium azide, 50% glycerol, pH7.3.

Product Images



Western blot analysis of extracts of various cell lines, using PPP1R3B antibody (CAB14931) at 1:1000 dilution. Secondary antibody: HRP Goat Anti-Rabbit IgG (H+L) (CABS014) at 1:10000 dilution. Lysates/proteins: 25ug per lane. Blocking buffer: 3% nonfat dry milk in TBST. Detection: ECL Enhanced Kit (CABM00021). Exposure time: 15s.