

# TMX1 Rabbit Polyclonal Antibody



**CAB14936**

---

## Product Information

### Size:

20uL, 50uL, 100uL, 200uL

### Observed MW:

35kDa

### Calculated MW:

31kDa

### Applications:

WB IHC

### Reactivity:

Human, Mouse, Rat

## Antibody Information

### Recommended dilutions:

WB 1:500 - 1:2000 IHC 1:50 - 1:200

### Source:

Rabbit

### Isotype:

IgG

### Purification:

Affinity purification

## Protein Background

This gene encodes a member of the disulfide isomerase (PDI) family of endoplasmic reticulum (ER) proteins that catalyze protein folding and thiol-disulfide interchange reactions. The encoded protein has an N-terminal ER-signal sequence, a catalytically active thioredoxin domain, and one transmembrane domain. Unlike most members of this gene family, it lacks a C-terminal ER-retention sequence. The mature membrane-bound protein can both oxidize and reduce disulfide bonds and acts selectively on membrane-associated polypeptides.

## Immunogen information

### Gene ID:

81542

### Uniprot

Q9H3N1

### Synonyms:

TMX1; PDIA11; TMX; TXNDC; TXNDC1

### Immunogen:

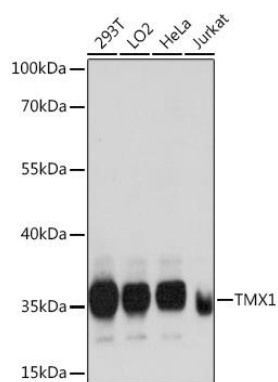
Recombinant fusion protein containing a sequence corresponding to amino acids 210-280 of human TMX1 (NP\_110382.3).

### Storage:

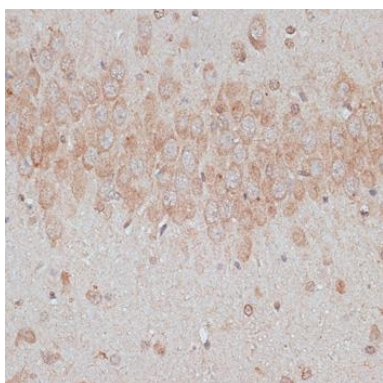
Store at -20°C. Avoid freeze / thaw cycles. Buffer: PBS with 0.02% sodium azide, 50% glycerol, pH7.3.

## Product Images

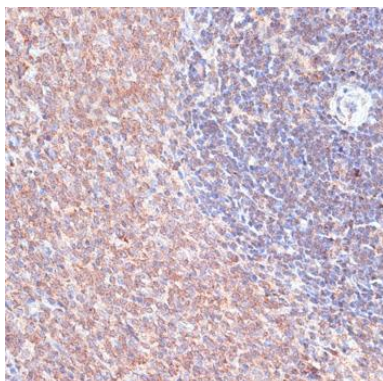
---



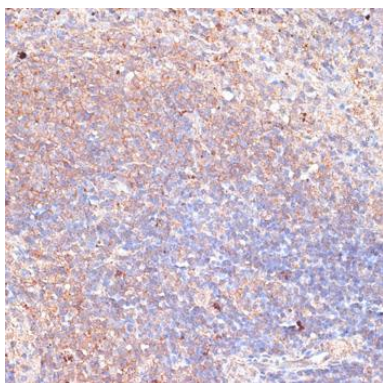
Western blot analysis of extracts of various cell lines, using TMX1 antibody (CAB14936) at 1:1000 dilution. Secondary antibody: HRP Goat Anti-Rabbit IgG (H+L) (CABS014) at 1:10000 dilution. Lysates/proteins: 25ug per lane. Blocking buffer: 3% nonfat dry milk in TBST. Detection: ECL Basic Kit (CABM00020). Exposure time: 60s.



Immunohistochemistry of paraffin-embedded rat brain using TMX1 antibody (CAB14936) at dilution of 1:100 (40x lens).



Immunohistochemistry of paraffin-embedded rat spleen using TMX1 antibody (CAB14936) at dilution of 1:100 (40x lens).



Immunohistochemistry of paraffin-embedded mouse spleen using TMX1 antibody (CAB14936) at dilution of 1:100 (40x lens).