

# RASSF4 Rabbit Polyclonal Antibody



CAB14943

## Product Information

### Size:

20uL, 50uL, 100uL, 200uL

### Observed MW:

37kDa

### Calculated MW:

13kDa/28kDa/36kDa/37kDa

### Applications:

WB

### Reactivity:

Human, Mouse, Rat

## Protein Background

The function of this gene has not yet been determined but may involve a role in tumor suppression. Alternative splicing of this gene results in several transcript variants; however, most of the variants have not been fully described.

## Immunogen information

### Gene ID:

83937

### Uniprot

Q9H2L5

### Synonyms:

RASSF4; AD037

## Antibody Information

### Recommended dilutions:

WB 1:500 - 1:2000

### Source:

Rabbit

### Isotype:

IgG

### Purification:

Affinity purification

### Immunogen:

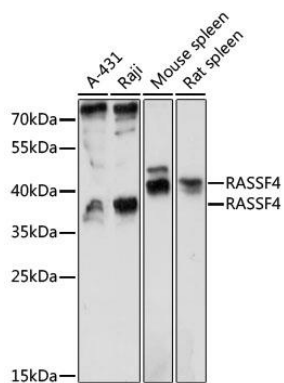
Recombinant fusion protein containing a sequence corresponding to amino acids 1-160 of human RASSF4 (NP\_114412.2).

### Storage:

Store at -20°C. Avoid freeze / thaw cycles. Buffer: PBS with 0.02% sodium azide, 50% glycerol, pH7.3.

## Product Images

---



Western blot analysis of extracts of various cell lines, using RASSF4 antibody (CAB14943) at 1:1000 dilution. Secondary antibody: HRP Goat Anti-Rabbit IgG (H+L) (CABS014) at 1:10000 dilution. Lysates/proteins: 25ug per lane. Blocking buffer: 3% nonfat dry milk in TBST. Detection: ECL Basic Kit (CABM00020). Exposure time: 90s.