

# NTPCR Rabbit Polyclonal Antibody



CAB14944

---

## Product Information

### Size:

20uL, 50uL, 100uL, 200uL

### Observed MW:

21kDa

### Calculated MW:

20kDa

### Applications:

WB IF

### Reactivity:

Human, Mouse

## Antibody Information

### Recommended dilutions:

WB 1:500 - 1:2000 IF 1:50 - 1:200

### Source:

Rabbit

### Isotype:

IgG

### Purification:

Affinity purification

## Protein Background

### Immunogen information

#### Gene ID:

84284

#### Uniprot

Q9BSD7

#### Synonyms:

NTPCR; C1orf57; HCR-NTPase

#### Immunogen:

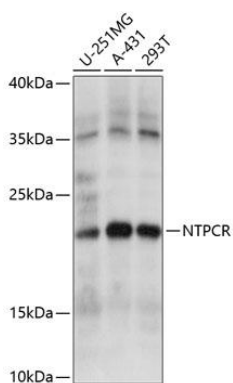
Recombinant fusion protein containing a sequence corresponding to amino acids 91-190 of human NTPCR (NP\_115700.1).

#### Storage:

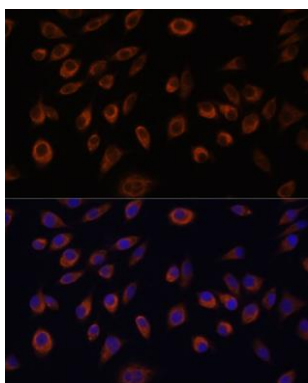
Store at -20°C. Avoid freeze / thaw cycles. Buffer: PBS with 0.02% sodium azide, 50% glycerol, pH7.3.

## Product Images

---



Western blot analysis of extracts of various cell lines, using NTPCR antibody (CAB14944) at 1:1000 dilution. Secondary antibody: HRP Goat Anti-Rabbit IgG (H+L) (CABS014) at 1:10000 dilution. Lysates/proteins: 25ug per lane. Blocking buffer: 3% nonfat dry milk in TBST. Detection: ECL Basic Kit (CABM00020). Exposure time: 10s.



Immunofluorescence analysis of L929 cells using NTPCR antibody (CAB14944) at dilution of 1:100. Blue: DAPI for nuclear staining.