

# LDHAL6B Rabbit Polyclonal Antibody



CAB14950

## Product Information

### Size:

20uL, 50uL, 100uL, 200uL

### Observed MW:

42kDa

### Calculated MW:

41kDa

### Applications:

WB IF

### Reactivity:

Mouse, Rat

## Antibody Information

### Recommended dilutions:

WB 1:500 - 1:2000 IF 1:50 - 1:200

### Source:

Rabbit

### Isotype:

IgG

### Purification:

Affinity purification

## Protein Background

### Immunogen information

#### Gene ID:

92483

#### Uniprot

Q9BYZ2

#### Synonyms:

LDHAL6B; LDH6B; LDHAL6; LDHL

#### Immunogen:

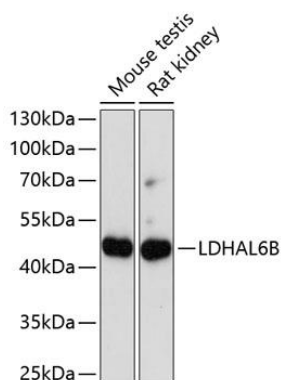
Recombinant fusion protein containing a sequence corresponding to amino acids 1-80 of human LDHAL6B (NP\_149972.1).

#### Storage:

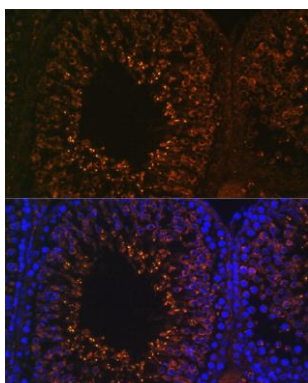
Store at -20°C. Avoid freeze / thaw cycles. Buffer: PBS with 0.02% sodium azide, 50% glycerol, pH7.3.

## Product Images

---



Western blot analysis of extracts of various cell lines, using LDHAL6B antibody (CAB14950) at 1:1000 dilution. Secondary antibody: HRP Goat Anti-Rabbit IgG (H+L) (CABS014) at 1:10000 dilution. Lysates/proteins: 25ug per lane. Blocking buffer: 3% nonfat dry milk in TBST. Detection: ECL Basic Kit (CABM00020). Exposure time: 90s.



Immunofluorescence analysis of rat testis using LDHAL6B antibody (CAB14950) at dilution of 1:100. Blue: DAPI for nuclear staining.