

PKD1L2 Rabbit Polyclonal Antibody



CAB14954

Product Information

Size:

20uL, 50uL, 100uL, 200uL

Observed MW:

33kDa

Calculated MW:

26kDa/32kDa/107kDa/197kDa/272kDa

Applications:

WB

Reactivity:

Mouse

Antibody Information

Recommended dilutions:

WB 1:500 - 1:2000

Source:

Rabbit

Isotype:

IgG

Purification:

Affinity purification

Protein Background

This gene encodes a member of the polycystin protein family. The encoded protein contains 11 transmembrane domains, a latrophilin/CL-1-like GPCR proteolytic site (GPS) domain, and a polycystin-1, lipooxygenase, alpha-toxin (PLAT) domain. This protein may function as a component of cation channel pores. This gene appears to be a polymorphic pseudogene in humans, where some individuals contain a non-functional allele. Alternative splicing results in multiple transcript variants.

Immunogen information

Gene ID:

114780

Uniprot

Q7Z442

Synonyms:

PKD1L2; PC1L2

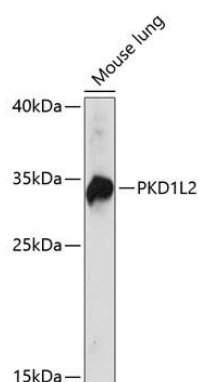
Immunogen:

Recombinant fusion protein containing a sequence corresponding to amino acids 1-306 of human PKD1L2 (NP_001265352.1).

Storage:

Store at -20°C. Avoid freeze / thaw cycles. Buffer: PBS with 0.02% sodium azide, 50% glycerol, pH7.3.

Product Images



Western blot analysis of extracts of mouse lung, using PKD1L2 antibody (CAB14954) at 1:1000 dilution. Secondary antibody: HRP Goat Anti-Rabbit IgG (H+L) (CABS014) at 1:10000 dilution. Lysates/proteins: 25ug per lane. Blocking buffer: 3% nonfat dry milk in TBST. Detection: ECL Basic Kit (CABM00020). Exposure time: 30s.