

# SLCO6A1 Rabbit Polyclonal Antibody



CAB14963

---

## Product Information

### Size:

20uL, 50uL, 100uL, 200uL

### Observed MW:

80kDa

### Calculated MW:

51kDa/72kDa/79kDa

### Applications:

WB

### Reactivity:

Human, Mouse, Rat

## Antibody Information

### Recommended dilutions:

WB 1:500 - 1:2000

### Source:

Rabbit

### Isotype:

IgG

### Purification:

Affinity purification

## Protein Background

### Immunogen information

#### Gene ID:

133482

#### Uniprot

Q86UG4

#### Synonyms:

SLCO6A1; CT48; GST; OATP-I; OATP6A1; OATPY

#### Immunogen:

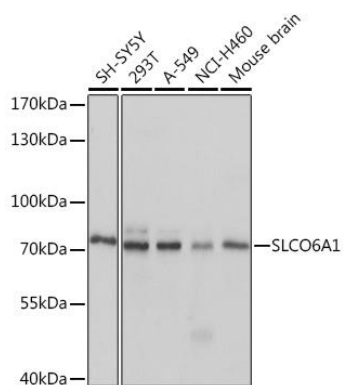
Recombinant fusion protein containing a sequence corresponding to amino acids 480-580 of human SLCO6A1 (NP\_775759.3).

#### Storage:

Store at -20°C. Avoid freeze / thaw cycles. Buffer: PBS with 0.02% sodium azide, 50% glycerol, pH7.3.

## Product Images

---



Western blot analysis of extracts of various cell lines, using SLCO6A1 Rabbit pAb (CAB14963) at 1:1000 dilution. Secondary antibody: HRP Goat Anti-Rabbit IgG (H+L) (CABS014) at 1:10000 dilution. Lysates/proteins: 25ug per lane. Blocking buffer: 3% nonfat dry milk in TBST. Detection: ECL Basic Kit (CABM00020). Exposure time: 1s.