

# ADAM32 Rabbit Polyclonal Antibody



CAB14977

---

## Product Information

**Size:**

20uL, 50uL, 100uL, 200uL

**Observed MW:**

88kDa

**Calculated MW:**

87kDa

**Applications:**

WB

**Reactivity:**

Human, Mouse

## Antibody Information

**Recommended dilutions:**

WB 1:500 - 1:2000

**Source:**

Rabbit

**Isotype:**

IgG

**Purification:**

Affinity purification

## Protein Background

This gene encodes a member of the disintegrin family of membrane-anchored proteins that play a role in diverse biological processes such as brain development, fertilization, tumor development and inflammation. This gene is predominantly expressed in the testis. The encoded protein undergoes proteolytic processing to generate a mature polypeptide comprised of an metalloprotease, disintegrin and epidermal growth factor-like domains. This gene is located in a cluster of other disintegrin and metallopeptidase family genes on chromosome 8. Alternative splicing results in multiple transcript variants encoding different isoforms.

## Immunogen information

**Gene ID:**

203102

**Uniprot**

Q8TC27

**Synonyms:**

ADAM32

**Immunogen:**

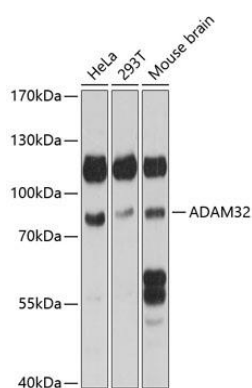
Recombinant fusion protein containing a sequence corresponding to amino acids 703-787 of human ADAM32 (NP\_659441.3).

**Storage:**

Store at -20°C. Avoid freeze / thaw cycles. Buffer: PBS with 0.02% sodium azide, 50% glycerol, pH7.3.

## Product Images

---



Western blot analysis of extracts of various cell lines, using ADAM32 antibody (CAB14977) at 1:1000 dilution. Secondary antibody: HRP Goat Anti-Rabbit IgG (H+L) (CABS014) at 1:10000 dilution. Lysates/proteins: 25ug per lane. Blocking buffer: 3% nonfat dry milk in TBST. Detection: ECL Basic Kit (CABM00020). Exposure time: 30s.