

RIMS2 Rabbit Polyclonal Antibody



CAB14990

Product Information

Size:

20uL, 50uL, 100uL, 200uL

Observed MW:

165kDa

Calculated MW:

85kDa/165kDa

Applications:

WB

Reactivity:

Human, Rat

Protein Background

The protein encoded by this gene is a presynaptic protein that interacts with RAB3, a protein important for normal neurotransmitter release. The encoded protein can also bind several other synaptic proteins, including UNC-13 homolog B, ELKS/Rab6-interacting/CAST family member 1, and synaptotagmin 1. This protein is involved in synaptic membrane exocytosis. Polymorphisms in this gene have been associated with degenerative lumbar scoliosis.

Immunogen information

Gene ID:

9699

Uniprot

Q9UQ26

Synonyms:

RIMS2; OBOE; RAB3IP3; RIM2

Antibody Information

Recommended dilutions:

WB 1:500 - 1:2000

Source:

Rabbit

Isotype:

IgG

Purification:

Affinity purification

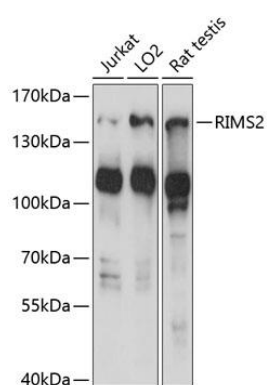
Immunogen:

Recombinant fusion protein containing a sequence corresponding to amino acids 1-350 of human RIMS2 (NP_055492.3).

Storage:

Store at -20°C. Avoid freeze / thaw cycles. Buffer: PBS with 0.02% sodium azide, 50% glycerol, pH7.3.

Product Images



Western blot analysis of extracts of various cell lines, using RIMS2 antibody (CAB14990) at 1:1000 dilution. Secondary antibody: HRP Goat Anti-Rabbit IgG (H+L) (CABS014) at 1:10000 dilution. Lysates/proteins: 25ug per lane. Blocking buffer: 3% nonfat dry milk in TBST. Detection: ECL Basic Kit (CABM00020). Exposure time: 15s.