

# LDLR Rabbit Polyclonal Antibody



CAB14996

## Product Information

### Size:

20uL, 50uL, 100uL, 200uL

### Observed MW:

120kDa

### Calculated MW:

75kDa/76kDa/82kDa/90kDa/  
95kDa

### Applications:

WB IHC IF

### Reactivity:

Human, Mouse, Rat

## Antibody Information

### Recommended dilutions:

WB 1:500 - 1:2000 IHC 1:50  
- 1:200 IF 1:50 - 1:200

### Source:

Rabbit

### Isotype:

IgG

### Purification:

Affinity purification

## Protein Background

The low density lipoprotein receptor (LDLR) gene family consists of cell surface proteins involved in receptor-mediated endocytosis of specific ligands. Low density lipoprotein (LDL) is normally bound at the cell membrane and taken into the cell ending up in lysosomes where the protein is degraded and the cholesterol is made available for repression of microsomal enzyme 3-hydroxy-3-methylglutaryl coenzyme A (HMG CoA) reductase, the rate-limiting step in cholesterol synthesis. At the same time, a reciprocal stimulation of cholesterol ester synthesis takes place. Mutations in this gene cause the autosomal dominant disorder, familial hypercholesterolemia. Alternate splicing results in multiple transcript variants.

## Immunogen information

### Gene ID:

3949

### Uniprot

P01130

### Synonyms:

LDLR; FH; FHC; LDLCQ2

### Immunogen:

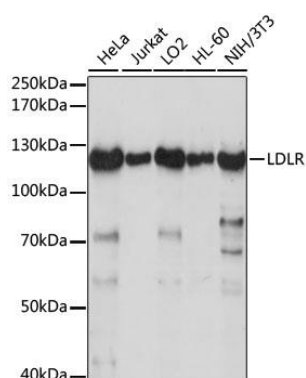
A synthetic peptide corresponding to a sequence within amino acids 800 to the C-terminus of human LDLR (NP\_000518.1).

### Storage:

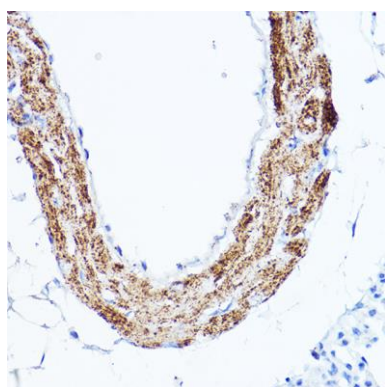
Store at -20°C. Avoid freeze / thaw cycles. Buffer: PBS with 0.02% sodium azide, 50% glycerol, pH7.3.

## Product Images

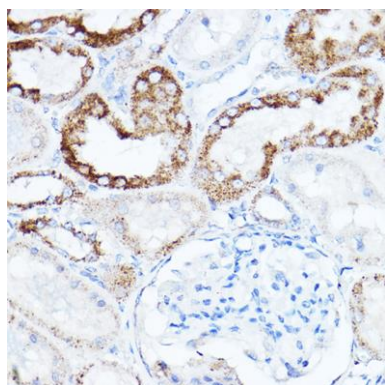
---



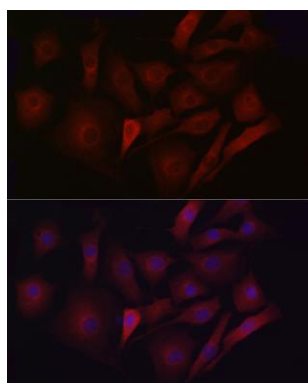
Western blot analysis of extracts of various cell lines, using LDLR antibody (CAB14996) at 1:1000 dilution. Secondary antibody: HRP Goat Anti-Rabbit IgG (H+L) (CABS014) at 1:10000 dilution. Lysates/proteins: 25ug per lane. Blocking buffer: 3% nonfat dry milk in TBST. Detection: ECL Basic Kit (CABM00020). Exposure time: 30s.



Immunohistochemistry of paraffin-embedded Mouse lung using LDLR antibody (CAB14996) at dilution of 1:100 (40x lens).



Immunohistochemistry of paraffin-embedded Rat kidney using LDLR antibody (CAB14996) at dilution of 1:100 (40x lens).



Immunofluorescence analysis of NIH/3T3 cells using LDLR antibody (CAB14996) at dilution of 1:50. Blue: DAPI for nuclear staining.