

REC8 Rabbit Polyclonal Antibody



CAB15002

Product Information

Size:

20uL, 50uL, 100uL, 200uL

Observed MW:

90kDa

Calculated MW:

67kDa

Applications:

WB

Reactivity:

Human, Rat

Antibody Information

Recommended dilutions:

WB 1:500 - 1:2000

Source:

Rabbit

Isotype:

IgG

Purification:

Affinity purification

Protein Background

This gene encodes a member of the kleisin family of SMC (structural maintenance of chromosome) protein partners. The protein localizes to the axial elements of chromosomes during meiosis in both oocytes and spermatocytes. In the mouse, the homologous protein is a key component of the meiotic cohesion complex, which regulates sister chromatid cohesion and recombination between homologous chromosomes. Multiple alternatively spliced variants, encoding the same protein, have been found for this gene.

Immunogen information

Gene ID:

56739

Uniprot

Synonyms:

REC8; HR21spB; REC8L1; Rec8p

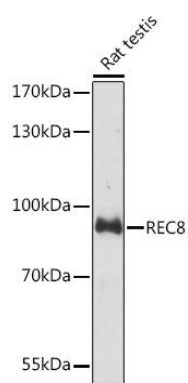
Immunogen:

Recombinant fusion protein containing a sequence corresponding to amino acids 194-561 of mouse REC8 (NP_064386.2).

Storage:

Store at -20°C. Avoid freeze / thaw cycles. Buffer: PBS with 0.02% sodium azide, 50% glycerol, pH7.3.

Product Images



Western blot analysis of extracts of Rat testis, using REC8 Rabbit pAb (CAB15002) at 1:3000 dilution. Secondary antibody: HRP Goat Anti-Rabbit IgG (H+L) (CABS014) at 1:10000 dilution. Lysates/proteins: 25ug per lane. Blocking buffer: 3% nonfat dry milk in TBST. Detection: ECL Basic Kit (CABM00020). Exposure time: 30s.