

# YTHDC2 Rabbit Polyclonal Antibody



**CAB15004**

---

## Product Information

### Size:

20uL, 50uL, 100uL, 200uL

### Observed MW:

160KDa

### Calculated MW:

160kDa

### Applications:

WB IF

### Reactivity:

Human, Mouse, Rat

## Antibody Information

### Recommended dilutions:

WB 1:500 - 1:2000 IF 1:50 - 1:200

### Source:

Rabbit

### Isotype:

IgG

### Purification:

Affinity purification

## Protein Background

This gene encodes a member of the DEAH (Asp-Glu-Ala-His) subfamily of proteins, part of the DEAD (Asp-Glu-Ala-Asp) box family of RNA helicases. The encoded protein binds to N6-methyladenosine, a common modified RNA nucleotide that is enriched in the stop codons and 3' UTRs of eukaryotic messenger RNAs. Binding of proteins to this modified nucleotide may regulate mRNA translation and stability. This gene may be associated with susceptibility to pancreatic cancer in human patients, and knockdown of this gene resulted in reduced proliferation in a human liver cancer cell line. [provided by RefSeq, Sep 2016]

## Immunogen information

### Gene ID:

64848

### Uniprot

Q9H6S0

### Synonyms:

YTHDC2; CAHL

### Immunogen:

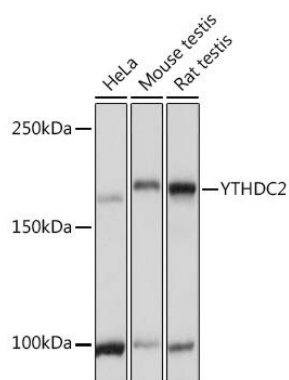
Recombinant fusion protein containing a sequence corresponding to amino acids 1131-1430 of human YTHDC2 (NP\_073739.3).

### Storage:

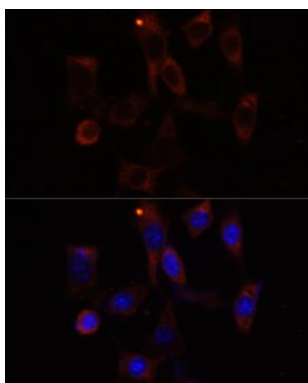
Store at -20°C. Avoid freeze / thaw cycles. Buffer: PBS with 0.02% sodium azide, 50% glycerol, pH7.3.

## Product Images

---



Western blot analysis of extracts of various cell lines, using YTHDC2 Rabbit pAb (CAB15004) at 1:3000 dilution. Secondary antibody: HRP Goat Anti-Rabbit IgG (H+L) (CABS014) at 1:10000 dilution. Lysates/proteins: 25ug per lane. Blocking buffer: 3% nonfat dry milk in TBST. Detection: ECL Basic Kit (CABM00020). Exposure time: 1s.



Immunofluorescence analysis of NIH/3T3 cells using YTHDC2 antibody (CAB15004) at dilution of 1:100. Blue: DAPI for nuclear staining.