

# KAT6A Rabbit Polyclonal Antibody



CAB15006

## Product Information

### Size:

20uL, 50uL, 100uL, 200uL

### Observed MW:

250kDa

### Calculated MW:

225kDa

### Applications:

WB IHC IF

### Reactivity:

Human, Mouse, Rat

## Antibody Information

### Recommended dilutions:

WB 1:500 - 1:2000 IHC 1:50  
- 1:200 IF 1:50 - 1:200

### Source:

Rabbit

### Isotype:

IgG

### Purification:

Affinity purification

## Protein Background

This gene encodes a member of the MOZ, YBFR2, SAS2, TIP60 family of histone acetyltransferases. The protein is composed of a nuclear localization domain, a double C2H2 zinc finger domain that binds to acetylated histone tails, a histone acetyl-transferase domain, a glutamate/aspartate-rich region, and a serine- and methionine-rich transactivation domain. It is part of a complex that acetylates lysine-9 residues in histone 3, and in addition, it acts as a co-activator for several transcription factors. Allelic variants of this gene are associated with autosomal dominant mental retardation-32. Alternative splicing results in multiple transcript variants.

## Immunogen information

### Gene ID:

7994

### Uniprot

Q92794

### Synonyms:

KAT6A; MOZ; MRD32; MYST-3; MYST3; RUNXBP2; ZC2HC6A;  
ZNF220

### Immunogen:

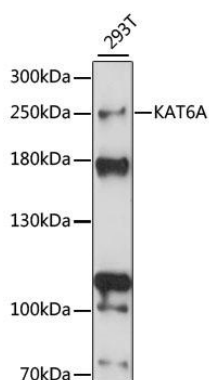
Recombinant fusion protein containing a sequence corresponding to amino acids 800-1000 of human KAT6A (NP\_001092883.1).

### Storage:

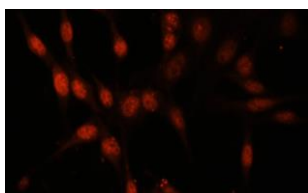
Store at -20°C. Avoid freeze / thaw cycles. Buffer: PBS with 0.02% sodium azide, 50% glycerol, pH7.3.

## Product Images

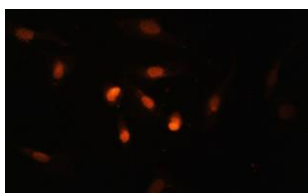
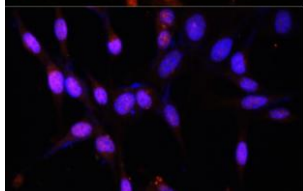
---



Western blot analysis of extracts of 293T cells, using KAT6A antibody (CAB15006) at 1:1000 dilution. Secondary antibody: HRP Goat Anti-Rabbit IgG (H+L) (CABS014) at 1:10000 dilution. Lysates/proteins: 25ug per lane. Blocking buffer: 3% nonfat dry milk in TBST. Detection: ECL Basic Kit (CABM00020). Exposure time: 10s.



Immunofluorescence analysis of NIH/3T3 cells using KAT6A antibody (CAB15006) at dilution of 1:100. Blue: DAPI for nuclear staining.



Immunofluorescence analysis of U2OS cells using KAT6A antibody (CAB15006) at dilution of 1:100. Blue: DAPI for nuclear staining.

