

# SGMS1 Rabbit Polyclonal Antibody



CAB15008

---

## Product Information

### Size:

20uL, 50uL, 100uL, 200uL

### Observed MW:

49kDa

### Calculated MW:

25kDa/49kDa

### Applications:

WB IF

### Reactivity:

Human, Rat

## Antibody Information

### Recommended dilutions:

WB 1:500 - 1:2000 IF 1:50 - 1:200

### Source:

Rabbit

### Isotype:

IgG

### Purification:

Affinity purification

## Protein Background

The protein encoded by this gene is predicted to be a five-pass transmembrane protein. This gene may be predominately expressed in brain.

## Immunogen information

### Gene ID:

259230

### Uniprot

Q86VZ5

### Synonyms:

SGMS1; MOB; MOB1; SMS1; TMEM23; hmob33

### Immunogen:

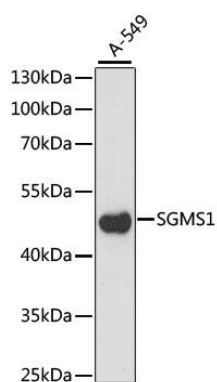
Recombinant fusion protein containing a sequence corresponding to amino acids 1-134 of human SGMS1 (NP\_671512.1).

### Storage:

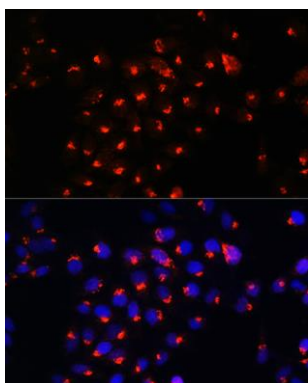
Store at -20°C. Avoid freeze / thaw cycles. Buffer: PBS with 0.02% sodium azide, 50% glycerol, pH7.3.

## Product Images

---



Western blot analysis of extracts of A-549 cells, using SGMS1 antibody (CAB15008) at 1:1000 dilution. Secondary antibody: HRP Goat Anti-Rabbit IgG (H+L) (CABS014) at 1:10000 dilution. Lysates/proteins: 25ug per lane. Blocking buffer: 3% nonfat dry milk in TBST. Detection: ECL Enhanced Kit (CABM00021). Exposure time: 930s.



Immunofluorescence analysis of HeLa cells using SGMS1 Rabbit pAb (CAB15008) at dilution of 1:100. Blue: DAPI for nuclear staining.