

BMP10 Rabbit Polyclonal Antibody



CAB15010

Product Information

Size:

20uL, 50uL, 100uL, 200uL

Observed MW:

48kDa

Calculated MW:

48kDa

Applications:

WB

Reactivity:

Rat

Protein Background

The protein encoded by this gene is a member of the TGF-beta family of growth factors. Data suggest that the similar protein in mouse plays an important role in trabeculation of the embryonic heart. In human, this protein may signal through receptor serine/threonine kinases.

Immunogen information

Gene ID:

27302

Uniprot

O95393

Synonyms:

BMP10

Antibody Information

Recommended dilutions:

WB 1:500 - 1:2000

Source:

Rabbit

Isotype:

IgG

Purification:

Affinity purification

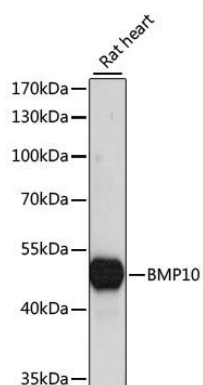
Immunogen:

Recombinant fusion protein containing a sequence corresponding to amino acids 22-316 of human BMP10 (NP_055297.1).

Storage:

Store at -20°C. Avoid freeze / thaw cycles. Buffer: PBS with 0.02% sodium azide, 50% glycerol, pH7.3.

Product Images



Western blot analysis of extracts of rat heart, using BMP10 antibody (CAB15010) at 1:1000 dilution. Secondary antibody: HRP Goat Anti-Rabbit IgG (H+L) (CABS014) at 1:10000 dilution. Lysates/proteins: 25ug per lane. Blocking buffer: 3% nonfat dry milk in TBST. Detection: ECL Basic Kit (CABM00020). Exposure time: 15s.