

A1BG Rabbit Polyclonal Antibody



CAB15015

Product Information

Size:

20uL, 50uL, 100uL, 200uL

Observed MW:

60-68kDa

Calculated MW:

40kDa/54kDa

Applications:

WB IF

Reactivity:

Human, Mouse, Rat

Protein Background

The protein encoded by this gene is a plasma glycoprotein of unknown function. The protein shows sequence similarity to the variable regions of some immunoglobulin supergene family member proteins.

Immunogen information

Gene ID:

1

Uniprot

P04217

Synonyms:

A1BG; A1B; ABG; GAB; HYST2477

Antibody Information

Recommended dilutions:

WB 1:500 - 1:2000 IF 1:50 - 1:200

Source:

Rabbit

Isotype:

IgG

Purification:

Affinity purification

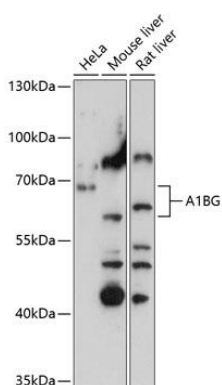
Immunogen:

Recombinant fusion protein containing a sequence corresponding to amino acids 236-495 of human A1BG (NP_570602.2).

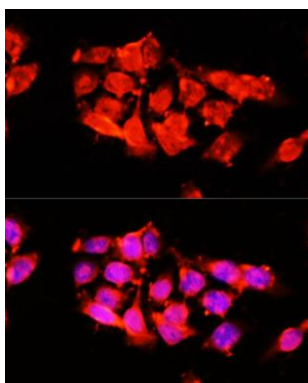
Storage:

Store at -20°C. Avoid freeze / thaw cycles. Buffer: PBS with 0.02% sodium azide, 50% glycerol, pH7.3.

Product Images



Western blot analysis of extracts of various cell lines, using A1BG antibody (CAB15015) at 1:3000 dilution. Secondary antibody: HRP Goat Anti-Rabbit IgG (H+L) (CABS014) at 1:10000 dilution. Lysates/proteins: 25ug per lane. Blocking buffer: 3% nonfat dry milk in TBST. Detection: ECL Basic Kit (CABM00020). Exposure time: 90s.



Immunofluorescence analysis of 293T cells using A1BG antibody (CAB15015) at dilution of 1:100 (40x lens). Blue: DAPI for nuclear staining.