

SLC25A6 Rabbit Polyclonal Antibody



CAB15029

Product Information

Size:

20uL, 50uL, 100uL, 200uL

Observed MW:

Calculated MW:

32kDa

Applications:

IF

Reactivity:

Human

Antibody Information

Recommended dilutions:

IF 1:50 - 1:200

Source:

Rabbit

Isotype:

IgG

Purification:

Affinity purification

Protein Background

This gene is a member of the mitochondrial carrier subfamily of solute carrier protein genes. The product of this gene functions as a gated pore that translocates ADP from the cytoplasm into the mitochondrial matrix and ATP from the mitochondrial matrix into the cytoplasm. The protein is implicated in the function of the permeability transition pore complex (PTPC), which regulates the release of mitochondrial products that induce apoptosis. The human genome contains several non-transcribed pseudogenes of this gene.

Immunogen information

Gene ID:

293

Uniprot

P12236

Synonyms:

SLC25A6; AAC3; ANT; ANT 2; ANT 3; ANT3; ANT3Y; ANT2

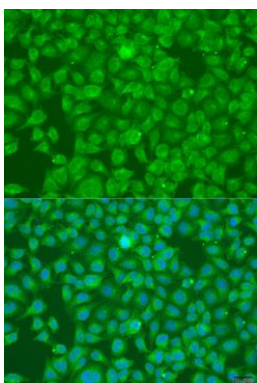
Immunogen:

Recombinant fusion protein containing a sequence corresponding to amino acids 1-298 of human SLC25A6 (NP_001627.2).

Storage:

Store at -20°C. Avoid freeze / thaw cycles. Buffer: PBS with 0.02% sodium azide, 50% glycerol, pH7.3.

Product Images



Immunofluorescence analysis of U2OS cells using SLC25A6 antibody (CAB15029) at dilution of 1:100. Blue: DAPI for nuclear staining.