

# ARSF Rabbit Polyclonal Antibody



CAB15031

## Product Information

### Size:

20uL, 50uL, 100uL, 200uL

### Observed MW:

Refer to figures

### Calculated MW:

65kDa

### Applications:

WB IF

### Reactivity:

Human

## Protein Background

This gene is a member of the sulfatase family, and more specifically, the arylsulfatase subfamily. Members of the subfamily share similarity in sequence and splice sites, and are clustered together on chromosome X, suggesting that they are derived from recent gene duplication events. Sulfatases are essential for the correct composition of bone and cartilage matrix. The activity of this protein, unlike that of arylsulfatase E, is not inhibited by warfarin. Multiple alternatively spliced variants, encoding the same protein, have been identified.

## Immunogen information

### Gene ID:

416

### Uniprot

P54793

### Synonyms:

ARSF; ASF

## Antibody Information

### Recommended dilutions:

WB 1:500 - 1:2000 IF 1:50 - 1:200

### Source:

Rabbit

### Isotype:

IgG

### Purification:

Affinity purification

### Immunogen:

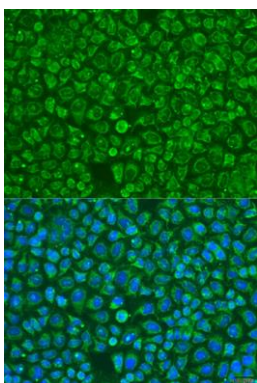
Recombinant fusion protein containing a sequence corresponding to amino acids 1-200 of human ARSF (NP\_004033.2).

### Storage:

Store at -20°C. Avoid freeze / thaw cycles. Buffer: PBS with 0.02% sodium azide, 50% glycerol, pH7.3.

## Product Images

---



Immunofluorescence analysis of U2OS cells using ARSF antibody (CAB15031) at dilution of 1:100. Blue: DAPI for nuclear staining.