

BRAF Rabbit Polyclonal Antibody



CAB15033

Product Information

Size:

20uL, 50uL, 100uL, 200uL

Observed MW:

105kDa

Calculated MW:

84kDa

Applications:

WB IHC IF

Reactivity:

Human, Mouse, Rat

Antibody Information

Recommended dilutions:

WB 1:500 - 1:2000 IHC 1:50
- 1:200 IF 1:50 - 1:200

Source:

Rabbit

Isotype:

IgG

Purification:

Affinity purification

Protein Background

This gene encodes a protein belonging to the raf/mil family of serine/threonine protein kinases. This protein plays a role in regulating the MAP kinase/ERKs signaling pathway, which affects cell division, differentiation, and secretion. Mutations in this gene are associated with cardiofaciocutaneous syndrome, a disease characterized by heart defects, mental retardation and a distinctive facial appearance. Mutations in this gene have also been associated with various cancers, including non-Hodgkin lymphoma, colorectal cancer, malignant melanoma, thyroid carcinoma, non-small cell lung carcinoma, and adenocarcinoma of lung. A pseudogene, which is located on chromosome X, has been identified for this gene.

Immunogen information

Gene ID:

673

Uniprot

P15056

Synonyms:

BRAF; B-RAF1; B-raf; BRAF1; NS7; RAFB1

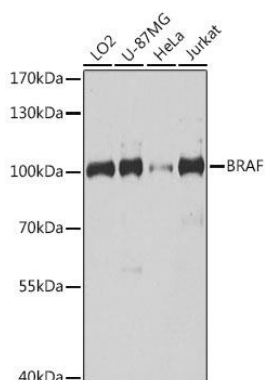
Immunogen:

Recombinant fusion protein containing a sequence corresponding to amino acids 350-449 of human BRAF (NP_004324.2).

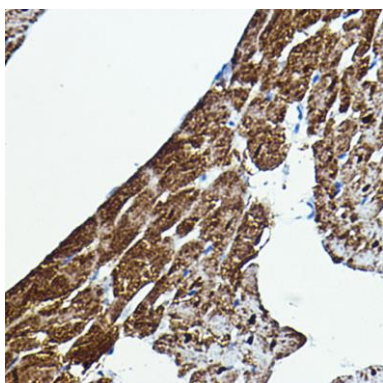
Storage:

Store at -20°C. Avoid freeze / thaw cycles. Buffer: PBS with 0.02% sodium azide, 50% glycerol, pH7.3.

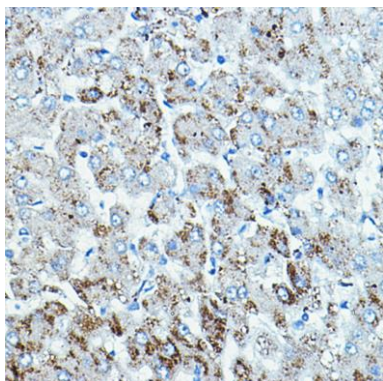
Product Images



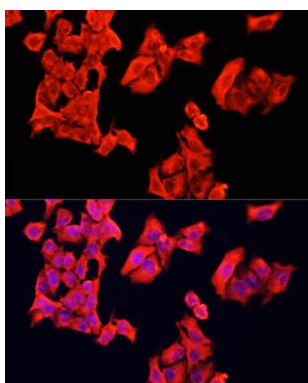
Western blot analysis of extracts of various cell lines, using BRAF antibody (CAB15033) at 1:1000 dilution. Secondary antibody: HRP Goat Anti-Rabbit IgG (H+L) (CABS014) at 1:10000 dilution. Lysates/proteins: 25ug per lane. Blocking buffer: 3% nonfat dry milk in TBST. Detection: ECL Basic Kit (CABM00020). Exposure time: 5s.



Immunohistochemistry of paraffin-embedded rat heart using BRAF Rabbit pAb (CAB15033) at dilution of 1:100 (40x lens).



Immunohistochemistry of paraffin-embedded human liver using BRAF Rabbit pAb (CAB15033) at dilution of 1:100 (40x lens).



Immunofluorescence analysis of HeLa cells using BRAF antibody (CAB15033) at dilution of 1:100. Blue: DAPI for nuclear staining.