

CALB1 Rabbit Polyclonal Antibody



CAB15035

Product Information

Size:

20uL, 50uL, 100uL, 200uL

Observed MW:

30kDa

Calculated MW:

23kDa/30kDa

Applications:

WB IHC

Reactivity:

Mouse, Rat

Protein Background

The protein encoded by this gene is a member of the calcium-binding protein superfamily that includes calmodulin and troponin C. Originally described as a 27 kDa protein, it is now known to be a 28 kDa protein. It contains four active calcium-binding domains, and has two modified domains that are thought to have lost their calcium binding capability. This protein is thought to buffer entry of calcium upon stimulation of glutamate receptors. Depletion of this protein was noted in patients with Huntington disease.

Immunogen information

Gene ID:

793

Uniprot

P05937

Synonyms:

CALB1; CALB; D-28K; calbindin; Calbindin

Antibody Information

Recommended dilutions:

WB 1:500 - 1:2000 IHC 1:50 - 1:100

Source:

Rabbit

Isotype:

IgG

Purification:

Affinity purification

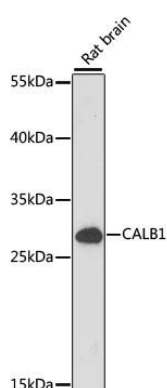
Immunogen:

Recombinant fusion protein containing a sequence corresponding to amino acids 1-261 of human CALB1 (NP_004920.1).

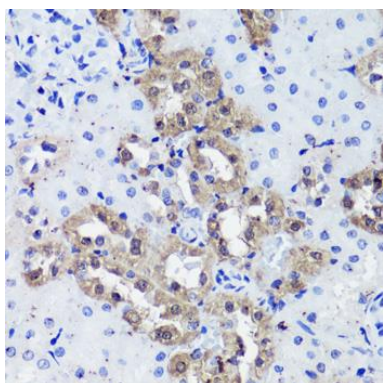
Storage:

Store at -20°C. Avoid freeze / thaw cycles. Buffer: PBS with 0.02% sodium azide, 50% glycerol, pH7.3.

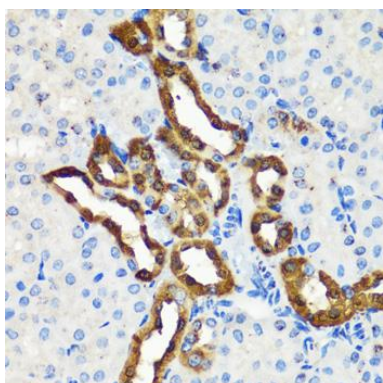
Product Images



Western blot analysis of extracts of Rat brain, using CALB1 antibody (CAB15035) at 1:1000 dilution. Secondary antibody: HRP Goat Anti-Rabbit IgG (H+L) (CABS014) at 1:10000 dilution. Lysates/proteins: 25ug per lane. Blocking buffer: 3% nonfat dry milk in TBST. Detection: ECL Enhanced Kit (CABM00021). Exposure time: 30.



Immunohistochemistry of paraffin-embedded rat kidney using CALB1 antibody (CAB15035) at dilution of 1:100 (40x lens).



Immunohistochemistry of paraffin-embedded mouse kidney using CALB1 antibody (CAB15035) at dilution of 1:100 (40x lens).