

CD68 Rabbit Polyclonal Antibody



CAB15037

Product Information

Size:

20uL, 50uL, 100uL, 200uL

Observed MW:

70-80kDa

Calculated MW:

31kDa/34kDa/37kDa

Applications:

WB IHC IF

Reactivity:

Human, Mouse

Antibody Information

Recommended dilutions:

WB 1:500 - 1:2000 IHC 1:50
- 1:200 IF 1:50 - 1:200

Source:

Rabbit

Isotype:

IgG

Purification:

Affinity purification

Protein Background

This gene encodes a 110-kD transmembrane glycoprotein that is highly expressed by human monocytes and tissue macrophages. It is a member of the lysosomal/endosomal-associated membrane glycoprotein (LAMP) family. The protein primarily localizes to lysosomes and endosomes with a smaller fraction circulating to the cell surface. It is a type I integral membrane protein with a heavily glycosylated extracellular domain and binds to tissue- and organ-specific lectins or selectins. The protein is also a member of the scavenger receptor family. Scavenger receptors typically function to clear cellular debris, promote phagocytosis, and mediate the recruitment and activation of macrophages. Alternative splicing results in multiple transcripts encoding different isoforms.

Immunogen information

Gene ID:

968

Uniprot

P34810

Synonyms:

CD68; GP110; LAMP4; SCARD1

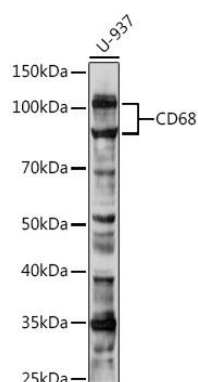
Immunogen:

Recombinant fusion protein containing a sequence corresponding to amino acids 16-200 of human CD68 (NP_001242.2).

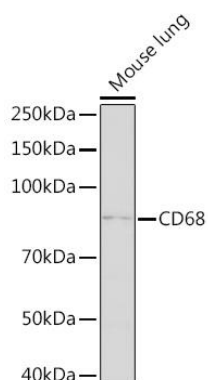
Storage:

Store at -20°C. Avoid freeze / thaw cycles. Buffer: PBS with 0.02% sodium azide, 50% glycerol, pH7.3.

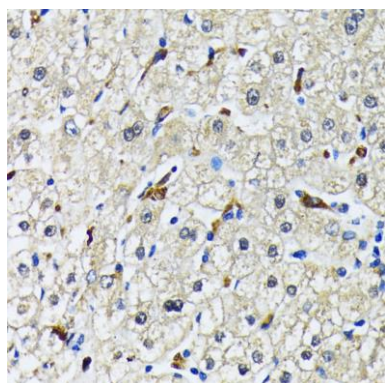
Product Images



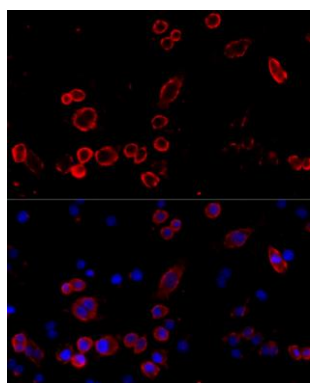
Western blot analysis of extracts of U-937 cells, using CD68 Rabbit pAb (CAB15037) at 1:500 dilution. Secondary antibody: HRP Goat Anti-Rabbit IgG (H+L) (CABS014) at 1:10000 dilution. Lysates/proteins: 25ug per lane. Blocking buffer: 3% nonfat dry milk in TBST. Detection: ECL Basic Kit (CABM00020). Exposure time: 180s.



Western blot analysis of extracts of Mouse lung, using CD68 Rabbit pAb (CAB15037) at 1:500 dilution. Secondary antibody: HRP Goat Anti-Rabbit IgG (H+L) (CABS014) at 1:10000 dilution. Lysates/proteins: 25ug per lane. Blocking buffer: 3% nonfat dry milk in TBST. Detection: ECL Enhanced Kit (CABM00021). Exposure time: 60s.



Immunohistochemistry of paraffin-embedded human liver using CD68 antibody (CAB15037) at dilution of 1:200 (40x lens).



Immunofluorescence analysis of RAW264.7 cells using CD68 antibody (CAB15037) at dilution of 1:100. Blue: DAPI for nuclear staining.