

# CHKA Rabbit Polyclonal Antibody



CAB15040

---

## Product Information

### Size:

20uL, 50uL, 100uL, 200uL

### Observed MW:

52kDa

### Calculated MW:

50kDa/52kDa

### Applications:

WB

### Reactivity:

Human, Mouse, Rat

## Protein Background

The major pathway for the biosynthesis of phosphatidylcholine occurs via the CDP-choline pathway. The protein encoded by this gene is the initial enzyme in the sequence and may play a regulatory role. The encoded protein also catalyzes the phosphorylation of ethanolamine. Two transcript variants encoding different isoforms have been found for this gene.

## Immunogen information

### Gene ID:

1119

### Uniprot

P35790

### Synonyms:

CHKA; CHK; CK; CKI; EK

## Antibody Information

### Recommended dilutions:

WB 1:500 - 1:2000

### Source:

Rabbit

### Isotype:

IgG

### Purification:

Affinity purification

### Immunogen:

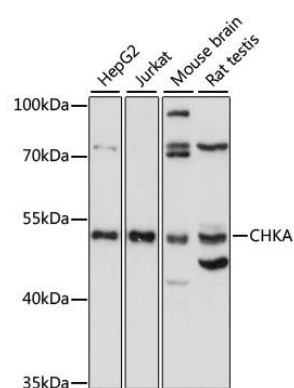
Recombinant fusion protein containing a sequence corresponding to amino acids 1-170 of human CHKA (NP\_001268.2).

### Storage:

Store at -20°C. Avoid freeze / thaw cycles. Buffer: PBS with 0.02% sodium azide, 50% glycerol, pH7.3.

## Product Images

---



Western blot analysis of extracts of various cell lines, using CHKA antibody (CAB15040) at 1:1000 dilution. Secondary antibody: HRP Goat Anti-Rabbit IgG (H+L) (CABS014) at 1:10000 dilution. Lysates/proteins: 25ug per lane. Blocking buffer: 3% nonfat dry milk in TBST. Detection: ECL Basic Kit (CABM00020). Exposure time: 30s.