

CYP2J2 Rabbit Polyclonal Antibody



CAB15045

Product Information

Size:

20uL, 50uL, 100uL, 200uL

Observed MW:

Calculated MW:

57kDa

Applications:

IF

Reactivity:

Human

Protein Background

This gene encodes a member of the cytochrome P450 superfamily of enzymes. The cytochrome P450 proteins are monooxygenases which catalyze many reactions involved in drug metabolism and synthesis of cholesterol, steroids and other lipids. This protein localizes to the endoplasmic reticulum and is thought to be the predominant enzyme responsible for epoxidation of endogenous arachidonic acid in cardiac tissue. Multiple transcript variants have been found for this gene.

Immunogen information

Gene ID:

1573

Uniprot

P51589

Synonyms:

CYP2J2; CPJ2; CYP11J2

Antibody Information

Recommended dilutions:

IF 1:50 - 1:200

Source:

Rabbit

Isotype:

IgG

Purification:

Affinity purification

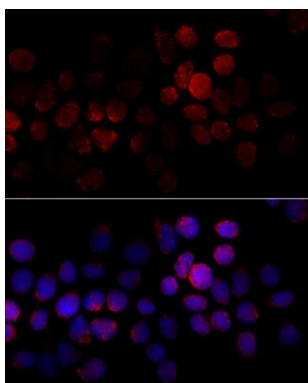
Immunogen:

A synthetic peptide corresponding to a sequence within amino acids 200-300 of human CYP2J2 (NP_000766.2).

Storage:

Store at -20°C. Avoid freeze / thaw cycles. Buffer: PBS with 0.02% sodium azide, 50% glycerol, pH7.3.

Product Images



Immunofluorescence analysis of HeLa cells using CYP2J2 antibody (CAB15045) at dilution of 1:100 (40x lens). Blue: DAPI for nuclear staining.