

# DCN Rabbit Polyclonal Antibody



CAB15048

## Product Information

### Size:

20uL, 50uL, 100uL, 200uL

### Observed MW:

45kDa/48kDa

### Calculated MW:

8kDa/19kDa/23kDa/27kDa/39kDa

### Applications:

WB IHC IF

### Reactivity:

Human, Mouse, Rat

## Protein Background

This gene encodes a member of the small leucine-rich proteoglycan family of proteins. Alternative splicing results in multiple transcript variants, at least one of which encodes a preproprotein that is proteolytically processed to generate the mature protein. This protein plays a role in collagen fibril assembly. Binding of this protein to multiple cell surface receptors mediates its role in tumor suppression, including a stimulatory effect on autophagy and inflammation and an inhibitory effect on angiogenesis and tumorigenesis. This gene and the related gene biglycan are thought to be the result of a gene duplication. Mutations in this gene are associated with congenital stromal corneal dystrophy in human patients.

## Immunogen information

### Gene ID:

1634

### Uniprot

P07585

### Synonyms:

DCN; CSCD; DSPG2; PG40; PGII; PGS2; SLRR1B; decorin; Decorin

## Antibody Information

### Recommended dilutions:

WB 1:500 - 1:2000 IHC 1:50  
- 1:100 IF 1:50 - 1:100

### Source:

Rabbit

### Isotype:

IgG

### Purification:

Affinity purification

### Immunogen:

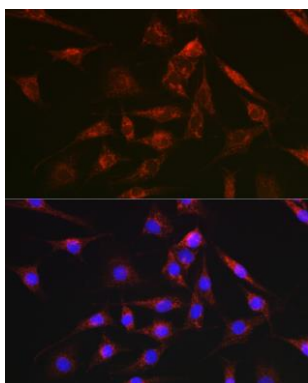
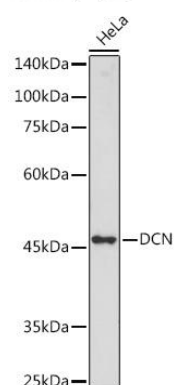
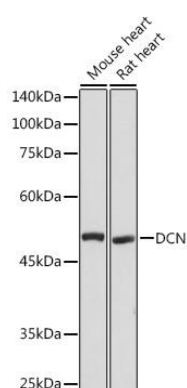
Recombinant fusion protein containing a sequence corresponding to amino acids 31-359 of human DCN (NP\_598010.1).

### Storage:

Store at -20°C. Avoid freeze / thaw cycles. Buffer: PBS with 0.02% sodium azide, 50% glycerol, pH7.3.

## Product Images

---



Western blot analysis of extracts of various cell lines, using DCN antibody (CAB15048) at 1:1000 dilution. Secondary antibody: HRP Goat Anti-Rabbit IgG (H+L) (CABS014) at 1:10000 dilution. Lysates/proteins: 25ug per lane. Blocking buffer: 3% nonfat dry milk in TBST. Detection: ECL Basic Kit (CABM00020). Exposure time: 3s.

Western blot analysis of extracts of HeLa cells, using DCN antibody (CAB15048) at 1:1000 dilution. Secondary antibody: HRP Goat Anti-Rabbit IgG (H+L) (CABS014) at 1:10000 dilution. Lysates/proteins: 25ug per lane. Blocking buffer: 3% nonfat dry milk in TBST. Detection: ECL Basic Kit (CABM00020). Exposure time: 30s.

Immunofluorescence analysis of NIH-3T3 cells using DCN Rabbit pAb (CAB15048) at dilution of 1:100 (40x lens). Blue: DAPI for nuclear staining.