

# TET1 Rabbit Polyclonal Antibody



CAB1506

## Product Information

### Size:

20uL, 50uL, 100uL, 200uL

### Observed MW:

235kDa

### Calculated MW:

235kDa

### Applications:

WB IHC IF

### Reactivity:

Human, Mouse, Rat

## Protein Background

DNA methylation is an epigenetic mechanism that is important for controlling gene expression. The protein encoded by this gene is a demethylase that belongs to the TET (ten-eleven translocation) family. Members of the TET protein family play a role in the DNA methylation process and gene activation.

## Immunogen information

### Gene ID:

80312

### Uniprot

Q8NFU7

### Synonyms:

TET1; CXXC6; LCX; bA119F7.1; MLL-TET1; TET1-MLL

## Antibody Information

### Recommended dilutions:

WB 1:500 - 1:2000 IHC 1:50  
- 1:200 IF 1:50 - 1:200

### Source:

Rabbit

### Isotype:

IgG

### Purification:

Affinity purification

### Immunogen:

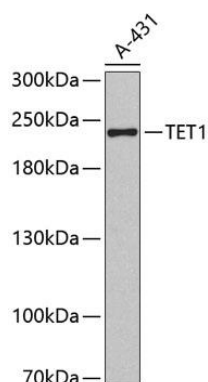
Recombinant protein of human TET1

### Storage:

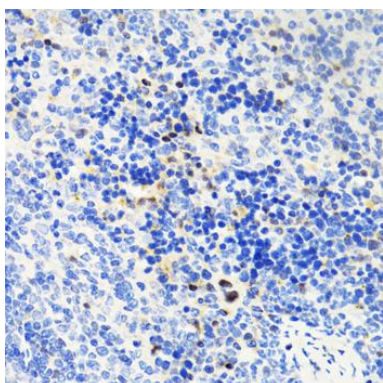
Store at -20°C. Avoid freeze / thaw cycles. Buffer: PBS with 0.02% sodium azide, 50% glycerol, pH7.3.

## Product Images

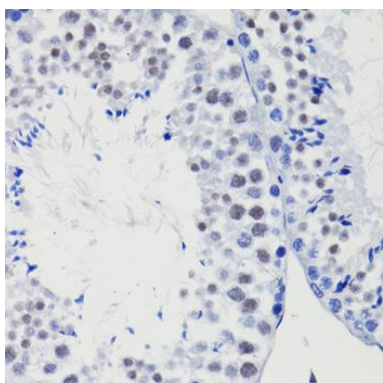
---



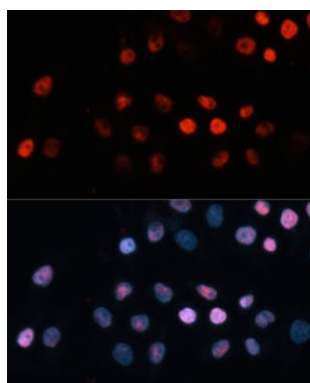
Western blot analysis of extracts of A-431 cells, using TET1 antibody (CAB1506). Secondary antibody: HRP Goat Anti-Rabbit IgG (H+L) (CABS014) at 1:10000 dilution. Lysates/proteins: 25ug per lane. Blocking buffer: 3% nonfat dry milk in TBST.



Immunohistochemistry of paraffin-embedded mouse spleen using TET1 antibody (CAB1506) at dilution of 1:100 (40x lens).



Immunohistochemistry of paraffin-embedded mouse testis using TET1 antibody (CAB1506) at dilution of 1:100 (40x lens).



Immunofluorescence analysis of HeLa cells using TET1 Polyclonal Antibody (CAB1506) at dilution of 1:100 (40x lens). Blue: DAPI for nuclear staining.