

# KRT14 Rabbit Polyclonal Antibody



CAB15069

## Product Information

### Size:

20uL, 50uL, 100uL, 200uL

### Observed MW:

52KDa

### Calculated MW:

51kDa

### Applications:

WB IHC IF

### Reactivity:

Human, Mouse, Rat

## Protein Background

This gene encodes a member of the keratin family, the most diverse group of intermediate filaments. This gene product, a type I keratin, is usually found as a heterotetramer with two keratin 5 molecules, a type II keratin. Together they form the cytoskeleton of epithelial cells. Mutations in the genes for these keratins are associated with epidermolysis bullosa simplex. At least one pseudogene has been identified at 17p12-p11.

## Immunogen information

### Gene ID:

3861

### Uniprot

P02533

### Synonyms:

CK14; EBS3; EBS4; K14; NFJ; Cytokeratin 14; KRT14

## Antibody Information

### Recommended dilutions:

WB 1:500 - 1:2000 IHC 1:50  
- 1:100 IF 1:50 - 1:100

### Source:

Rabbit

### Isotype:

IgG

### Purification:

Affinity purification

### Immunogen:

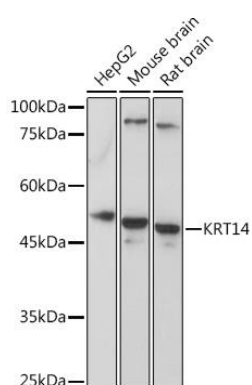
A synthetic peptide corresponding to a sequence within amino acids 400 to the C-terminus of human KRT14 (NP\_000517.2).

### Storage:

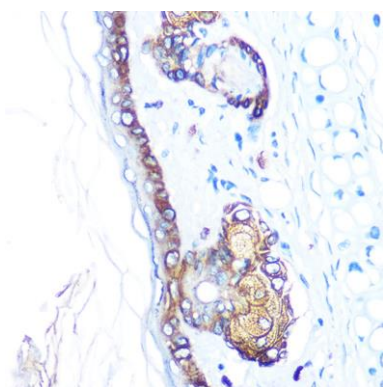
Store at -20°C. Avoid freeze / thaw cycles. Buffer: PBS with 0.02% sodium azide, 50% glycerol, pH7.3.

## Product Images

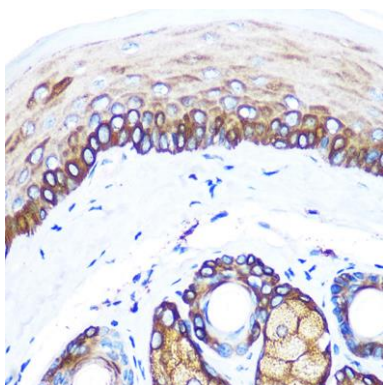
---



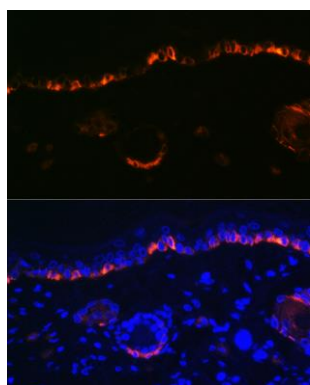
Western blot analysis of extracts of various cell lines, using KRT14 Rabbit pAb (CAB15069) at 1:5000 dilution. Secondary antibody: HRP Goat Anti-Rabbit IgG (H+L) (CABS014) at 1:10000 dilution. Lysates/proteins: 25ug per lane. Blocking buffer: 3% nonfat dry milk in TBST. Detection: ECL Basic Kit (CABM00020). Exposure time: 30s.



Immunohistochemistry of paraffin-embedded Rat skin using KRT14 Rabbit pAb (CAB15069) at dilution of 1:100 (40x lens).



Immunohistochemistry of paraffin-embedded Mouse skin using KRT14 Rabbit pAb (CAB15069) at dilution of 1:100 (40x lens).



Immunofluorescence analysis of Rat skin cells using KRT14 antibody (CAB15069) at dilution of 1:100. Blue: DAPI for nuclear staining.