

# HSPA1A Mouse Monoclonal Antibody



CAB1507

## Product Information

### Size:

20uL, 50uL, 100uL, 200uL

### Observed MW:

70kDa

### Calculated MW:

70kDa

### Applications:

WB IHC

### Reactivity:

Human, Mouse, Rat

## Antibody Information

### Recommended dilutions:

WB 1:2000 - 1:5000 IHC

1:50 - 1:200

### Source:

Mouse

### Isotype:

IgG

### Purification:

Affinity purification

## Protein Background

This intronless gene encodes a 70kDa heat shock protein which is a member of the heat shock protein 70 family. In conjunction with other heat shock proteins, this protein stabilizes existing proteins against aggregation and mediates the folding of newly translated proteins in the cytosol and in organelles. It is also involved in the ubiquitin-proteasome pathway through interaction with the AU-rich element RNA-binding protein 1. The gene is located in the major histocompatibility complex class III region, in a cluster with two closely related genes which encode similar proteins.

## Immunogen information

### Gene ID:

3303

### Uniprot

PODMV8

### Synonyms:

HSPA1A; HEL-S-103; HSP70-1; HSP70-1A; HSP70.1; HSP70I; HSP72;

HSPA1; HSP70

### Immunogen:

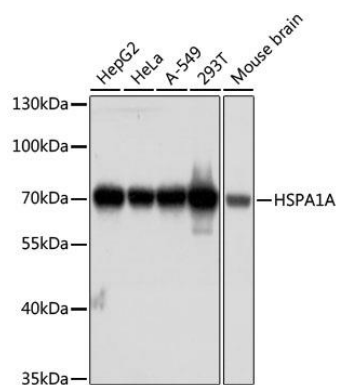
A synthetic peptide of human HSPA1A

### Storage:

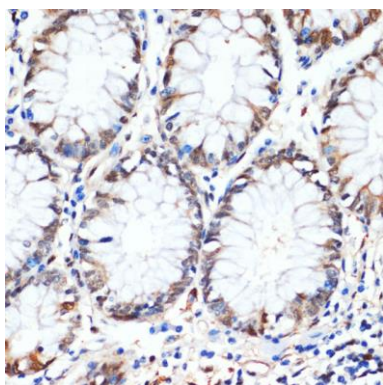
Store at -20°C. Avoid freeze / thaw cycles. Buffer: PBS with 0.02% sodium azide, 50% glycerol, pH7.3.

## Product Images

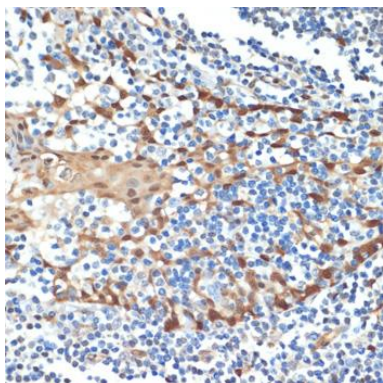
---



Western blot analysis of extracts of various cell lines, using HSPA1A antibody (CAB1507) at 1:1000 dilution. Secondary antibody: HRP Goat Anti-Rabbit IgG (H+L) (CABS014) at 1:10000 dilution. Lysates/proteins: 25ug per lane. Blocking buffer: 3% nonfat dry milk in TBST. Detection: ECL Basic Kit (CABM00020). Exposure time: 60s.



Immunohistochemistry of paraffin-embedded human colon using HSPA1A antibody (CAB1507) at dilution of 1:100 (40x lens).



Immunohistochemistry of paraffin-embedded human tonsil using HSPA1A antibody (CAB1507) at dilution of 1:100 (40x lens).