

LTC4S Rabbit Polyclonal Antibody



CAB15071

Product Information

Size:

20uL, 50uL, 100uL, 200uL

Observed MW:

17kDa

Calculated MW:

16kDa

Applications:

WB

Reactivity:

Human

Protein Background

The MAPEG (Membrane Associated Proteins in Eicosanoid and Glutathione metabolism) family includes a number of human proteins, several of which are involved the production of leukotrienes. This gene encodes an enzyme that catalyzes the first step in the biosynthesis of cysteinyl leukotrienes, potent biological compounds derived from arachidonic acid. Leukotrienes have been implicated as mediators of anaphylaxis and inflammatory conditions such as human bronchial asthma. This protein localizes to the nuclear envelope and adjacent endoplasmic reticulum.

Immunogen information

Gene ID:

4056

Uniprot

Q16873

Synonyms:

LTC4S

Antibody Information

Recommended dilutions:

WB 1:500 - 1:2000

Source:

Rabbit

Isotype:

IgG

Purification:

Affinity purification

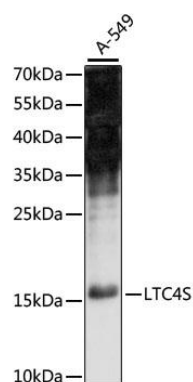
Immunogen:

A synthetic peptide corresponding to a sequence within amino acids 50 to the C-terminus of human LTC4S (NP_665874.1).

Storage:

Store at -20°C. Avoid freeze / thaw cycles. Buffer: PBS with 0.02% sodium azide, 50% glycerol, pH7.3.

Product Images



Western blot analysis of extracts of A-549 cells, using LTC4S antibody (CAB15071) at 1:1000 dilution. Secondary antibody: HRP Goat Anti-Rabbit IgG (H+L) (CABS014) at 1:10000 dilution. Lysates/proteins: 25ug per lane. Blocking buffer: 3% nonfat dry milk in TBST. Detection: ECL Enhanced Kit (CABM00021). Exposure time: 90.