

# MATN3 Rabbit Polyclonal Antibody



CAB15072

## Product Information

### Size:

20uL, 50uL, 100uL, 200uL

### Observed MW:

### Calculated MW:

48kDa/52kDa

### Applications:

IF

### Reactivity:

Human

## Antibody Information

### Recommended dilutions:

IF 1:50 - 1:200

### Source:

Rabbit

### Isotype:

IgG

### Purification:

Affinity purification

## Protein Background

This gene encodes a member of von Willebrand factor A domain containing protein family. This family of proteins is thought to be involved in the formation of filamentous networks in the extracellular matrices of various tissues. This protein contains two von Willebrand factor A domains; it is present in the cartilage extracellular matrix and has a role in the development and homeostasis of cartilage and bone. Mutations in this gene result in multiple epiphyseal dysplasia.

## Immunogen information

### Gene ID:

4148

### Uniprot

O15232

### Synonyms:

MATN3; DIPOA; EDM5; HOA; OADIP; OS2

### Immunogen:

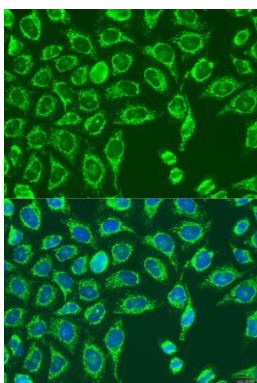
Recombinant fusion protein containing a sequence corresponding to amino acids 277-486 of human MATN3 (NP\_002372.1).

### Storage:

Store at -20°C. Avoid freeze / thaw cycles. Buffer: PBS with 0.02% sodium azide, 50% glycerol, pH7.3.

## Product Images

---



Immunofluorescence analysis of U2OS cells using MATN3 antibody (CAB15072) at dilution of 1:100. Blue: DAPI for nuclear staining.