

NPY Rabbit Polyclonal Antibody



CAB15076

Product Information

Size:

20uL, 50uL, 100uL, 200uL

Observed MW:

Calculated MW:

10kDa

Applications:

IF

Reactivity:

Human

Antibody Information

Recommended dilutions:

IF 1:50 - 1:200

Source:

Rabbit

Isotype:

IgG

Purification:

Affinity purification

Protein Background

This gene encodes a neuropeptide that is widely expressed in the central nervous system and influences many physiological processes, including cortical excitability, stress response, food intake, circadian rhythms, and cardiovascular function. The neuropeptide functions through G protein-coupled receptors to inhibit adenylyl cyclase, activate mitogen-activated protein kinase (MAPK), regulate intracellular calcium levels, and activate potassium channels. A polymorphism in this gene resulting in a change of leucine 7 to proline in the signal peptide is associated with elevated cholesterol levels, higher alcohol consumption, and may be a risk factor for various metabolic and cardiovascular diseases. The protein also exhibits antimicrobial activity against bacteria and fungi.

Immunogen information

Gene ID:

4852

Uniprot

P01303

Synonyms:

NPY; PYY4

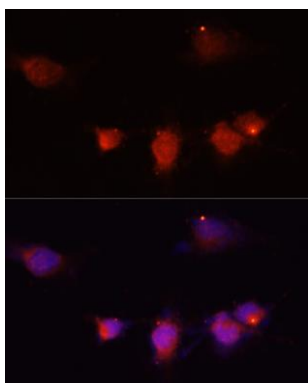
Immunogen:

Recombinant fusion protein containing a sequence corresponding to amino acids 1-97 of human NPY (NP_000896.1).

Storage:

Store at -20°C. Avoid freeze / thaw cycles. Buffer: PBS with 0.02% sodium azide, 50% glycerol, pH7.3.

Product Images



Immunofluorescence analysis of U-251MG cells using NPY antibody (CAB15076) at dilution of 1:100 (40x lens). Blue: DAPI for nuclear staining.