

# PDE1C Rabbit Polyclonal Antibody



CAB15078

## Product Information

### Size:

20uL, 50uL, 100uL, 200uL

### Observed MW:

81kDa

### Calculated MW:

72kDa/80kDa/86kDa

### Applications:

WB

### Reactivity:

Human, Mouse, Rat

## Protein Background

This gene encodes an enzyme that belongs to the 3'5'-cyclic nucleotide phosphodiesterase family. Members of this family catalyze hydrolysis of the cyclic nucleotides, cyclic adenosine monophosphate and cyclic guanosine monophosphate, to the corresponding nucleoside 5'-monophosphates. The enzyme encoded by this gene regulates proliferation and migration of vascular smooth muscle cells, and neointimal hyperplasia. This enzyme also plays a role in pathological vascular remodeling by regulating the stability of growth factor receptors, such as PDGF-receptor-beta.

## Immunogen information

### Gene ID:

5137

### Uniprot

Q14123

### Synonyms:

PDE1C; Hcam3; cam-PDE 1C; hCam-3; cam-PDE1C

## Antibody Information

### Recommended dilutions:

WB 1:500 - 1:2000

### Source:

Rabbit

### Isotype:

IgG

### Purification:

Affinity purification

### Immunogen:

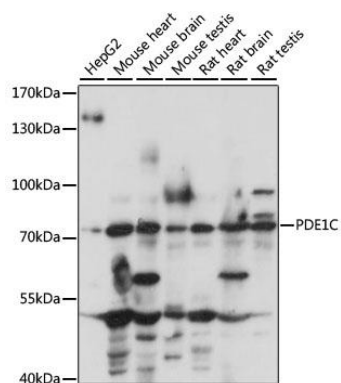
Recombinant fusion protein containing a sequence corresponding to amino acids 435-634 of human PDE1C (NP\_001177985.1).

### Storage:

Store at -20°C. Avoid freeze / thaw cycles. Buffer: PBS with 0.02% sodium azide, 50% glycerol, pH7.3.

## Product Images

---



Western blot analysis of extracts of various cell lines, using PDE1C antibody (CAB15078) at 1:1000 dilution. Secondary antibody: HRP Goat Anti-Rabbit IgG (H+L) (CABS014) at 1:10000 dilution. Lysates/proteins: 25ug per lane. Blocking buffer: 3% nonfat dry milk in TBST. Detection: ECL Basic Kit (CABM00020). Exposure time: 10s.