

# ITGAX Rabbit Polyclonal Antibody



CAB1508

## Product Information

### Size:

20uL, 50uL, 100uL, 200uL

### Observed MW:

145KDa

### Calculated MW:

127kDa

### Applications:

WB IHC IF

### Reactivity:

Human, Mouse, Rat

## Protein Background

This gene encodes the integrin alpha X chain protein. Integrins are heterodimeric integral membrane proteins composed of an alpha chain and a beta chain. This protein combines with the beta 2 chain (ITGB2) to form a leukocyte-specific integrin referred to as inactivated-C3b (iC3b) receptor 4 (CR4). The alpha X beta 2 complex seems to overlap the properties of the alpha M beta 2 integrin in the adherence of neutrophils and monocytes to stimulated endothelium cells, and in the phagocytosis of complement coated particles. Two transcript variants encoding different isoforms have been found for this gene.

## Immunogen information

### Gene ID:

3687

### Uniprot

P20702

### Synonyms:

ITGAX; CD11C; SLEB6

## Antibody Information

### Recommended dilutions:

WB 1:500 - 1:2000 IHC 1:50  
- 1:200 IF 1:50 - 1:200

### Source:

Rabbit

### Isotype:

IgG

### Purification:

Affinity purification

### Immunogen:

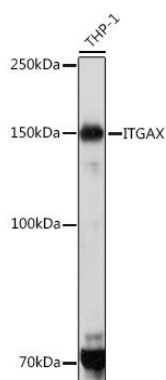
Recombinant fusion protein containing a sequence corresponding to amino acids 100-350 of human ITGAX (NP\_000878.2).

### Storage:

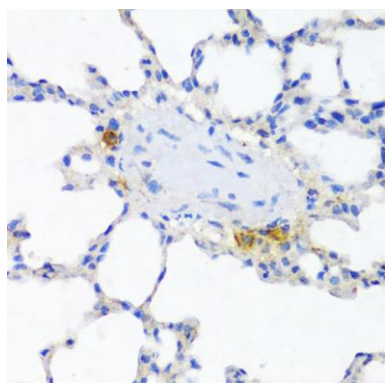
Store at -20°C. Avoid freeze / thaw cycles. Buffer: PBS with 0.02% sodium azide, 50% glycerol, pH7.3.

## Product Images

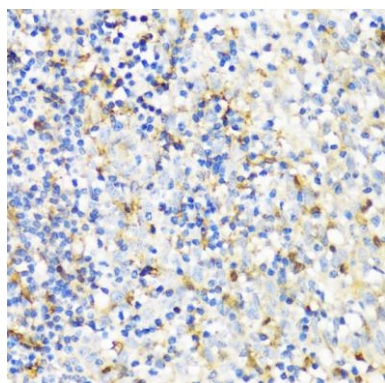
---



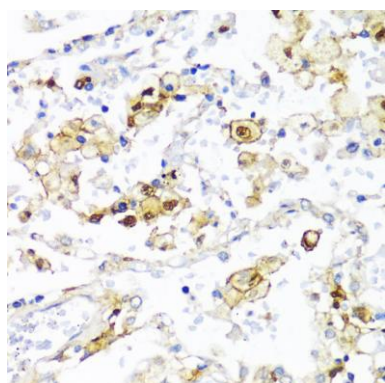
Western blot analysis of extracts of THP-1 cells, using ITGAX Rabbit pAb (CAB1508) at 1:1000 dilution. Secondary antibody: HRP Goat Anti-Rabbit IgG (H+L) (CABS014) at 1:10000 dilution. Lysates/proteins: 25ug per lane. Blocking buffer: 3% nonfat dry milk in TBST. Detection: ECL Basic Kit (CABM00020). Exposure time: 10s.



Immunohistochemistry of paraffin-embedded rat lung using ITGAX antibody (CAB1508) at dilution of 1:100 (40x lens).



Immunohistochemistry of paraffin-embedded human tonsil using ITGAX antibody (CAB1508) at dilution of 1:100 (40x lens).



Immunohistochemistry of paraffin-embedded human lung cancer using ITGAX antibody (CAB1508) at dilution of 1:100 (40x lens).