

PFKL Rabbit Polyclonal Antibody



CAB15080

Product Information

Size:

20uL, 50uL, 100uL, 200uL

Observed MW:

Calculated MW:

85kDa/90kDa

Applications:

IF

Reactivity:

Human

Antibody Information

Recommended dilutions:

IF 1:50 - 1:200

Source:

Rabbit

Isotype:

IgG

Purification:

Affinity purification

Protein Background

This gene encodes the liver (L) subunit of an enzyme that catalyzes the conversion of D-fructose 6-phosphate to D-fructose 1, 6-bisphosphate, which is a key step in glucose metabolism (glycolysis). This enzyme is a tetramer that may be composed of different subunits encoded by distinct genes in different tissues. Alternative splicing results in multiple transcript variants.

Immunogen information

Gene ID:

5211

Uniprot

P17858

Synonyms:

PFKL; ATP-PFK; PFK-B; PFK-L

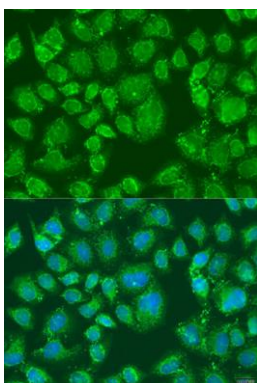
Immunogen:

Recombinant fusion protein containing a sequence corresponding to amino acids 601-780 of human PFKL (NP_002617.3).

Storage:

Store at -20°C. Avoid freeze / thaw cycles. Buffer: PBS with 0.02% sodium azide, 50% glycerol, pH7.3.

Product Images



Immunofluorescence analysis of U2OS cells using PFKL antibody (CAB15080) at dilution of 1:100. Blue: DAPI for nuclear staining.