

# PTGFR Rabbit Polyclonal Antibody



CAB15088

## Product Information

### Size:

20uL, 50uL, 100uL, 200uL

### Observed MW:

40kDa

### Calculated MW:

29kDa/30kDa/32kDa/33kDa/  
40kDa

### Applications:

WB

### Reactivity:

Mouse, Rat

## Antibody Information

### Recommended dilutions:

WB 1:500 - 1:2000

### Source:

Rabbit

### Isotype:

IgG

### Purification:

Affinity purification

## Protein Background

The protein encoded by this gene is member of the G-protein coupled receptor family. This protein is a receptor for prostaglandin F2-alpha (PGF2-alpha), which is known to be a potent luteolytic agent, and may also be involved in modulating intraocular pressure and smooth muscle contraction in uterus. Knockout studies in mice suggest that the interaction of PGF2-alpha with this receptor may initiate parturition in ovarian luteal cells and thus induce luteolysis. Two transcript variants encoding different isoforms have been found for this gene.

## Immunogen information

### Gene ID:

5737

### Uniprot

P43088

### Synonyms:

PTGFR; FP

### Immunogen:

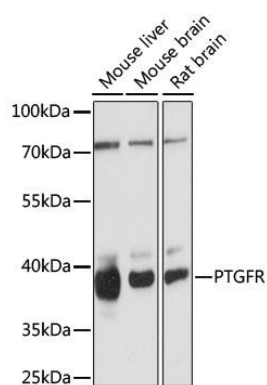
A synthetic peptide corresponding to a sequence within amino acids 50-150 of human PTGFR (NP\_000950.1).

### Storage:

Store at -20°C. Avoid freeze / thaw cycles. Buffer: PBS with 0.02% sodium azide, 50% glycerol, pH7.3.

## Product Images

---



Western blot analysis of extracts of various cell lines, using PTGFR antibody (CAB15088) at 1:1000 dilution. Secondary antibody: HRP Goat Anti-Rabbit IgG (H+L) (CABS014) at 1:10000 dilution. Lysates/proteins: 25ug per lane. Blocking buffer: 3% nonfat dry milk in TBST. Detection: ECL Basic Kit (CABM00020). Exposure time: 90s.