

RABIF Rabbit Polyclonal Antibody



CAB15090

Product Information

Size:

20uL, 50uL, 100uL, 200uL

Observed MW:

14kDa

Calculated MW:

13kDa

Applications:

WB IF

Reactivity:

Human, Mouse, Rat

Protein Background

This gene encodes a member of the SCE4/YPT1/RAB family of small GTP-binding proteins that are involved in the regulation of intracellular vesicular transport. This protein stimulates GTP-GDP exchange in SEC4, and to a lesser extent in YPT1 and RAB3A, and may play a general role in vesicular transport.

Immunogen information

Gene ID:

5877

Uniprot

P47224

Synonyms:

RABIF; MSS4; RASGFR3; RASGRF3

Antibody Information

Recommended dilutions:

WB 1:500 - 1:2000 IF 1:50 - 1:100

Source:

Rabbit

Isotype:

IgG

Purification:

Affinity purification

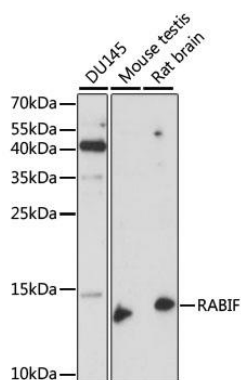
Immunogen:

Recombinant fusion protein containing a sequence corresponding to amino acids 1-123 of human RABIF (NP_002862.2).

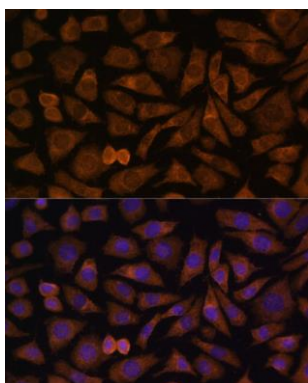
Storage:

Store at -20°C. Avoid freeze / thaw cycles. Buffer: PBS with 0.02% sodium azide, 50% glycerol, pH7.3.

Product Images



Western blot analysis of extracts of various cell lines, using RABIF antibody (CAB15090) at 1:1000 dilution. Secondary antibody: HRP Goat Anti-Rabbit IgG (H+L) (CABS014) at 1:10000 dilution. Lysates/proteins: 25ug per lane. Blocking buffer: 3% nonfat dry milk in TBST. Detection: ECL Enhanced Kit (CABM00021). Exposure time: 90s.



Immunofluorescence analysis of L929 cells using RABIF Polyclonal Antibody (CAB15090) at dilution of 1:100 (40x lens). Blue: DAPI for nuclear staining.