

RHO Rabbit Polyclonal Antibody



CAB15093

Product Information

Size:

20uL, 50uL, 100uL, 200uL

Observed MW:

39kDa

Calculated MW:

38kDa

Applications:

WB IHC

Reactivity:

Mouse, Rat

Protein Background

Retinitis pigmentosa is an inherited progressive disease which is a major cause of blindness in western communities. It can be inherited as an autosomal dominant, autosomal recessive, or X-linked recessive disorder. In the autosomal dominant form, which comprises about 25% of total cases, approximately 30% of families have mutations in the gene encoding the rod photoreceptor-specific protein rhodopsin. This is the transmembrane protein which, when photoexcited, initiates the visual transduction cascade. Defects in this gene are also one of the causes of congenital stationary night blindness.

Immunogen information

Gene ID:

6010

Uniprot

P08100

Synonyms:

RHO; CSNBAD1; OPN2; RP4; rhodopsin

Antibody Information

Recommended dilutions:

WB 1:500 - 1:2000 IHC 1:50 - 1:200

Source:

Rabbit

Isotype:

IgG

Purification:

Affinity purification

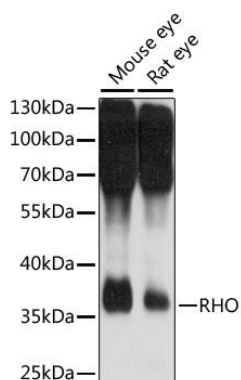
Immunogen:

A synthetic peptide corresponding to a sequence within amino acids 200 to the C-terminus of human RHO (NP_000530.1).

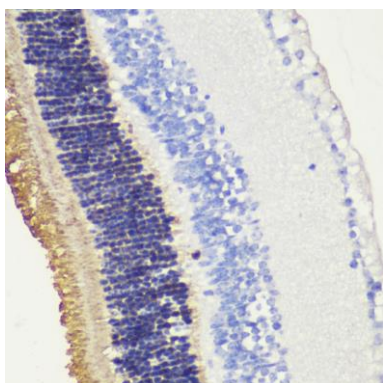
Storage:

Store at -20°C. Avoid freeze / thaw cycles. Buffer: PBS with 0.02% sodium azide, 50% glycerol, pH7.3.

Product Images



Western blot analysis of extracts of various cell lines, using RHO antibody (CAB15093) at 1:1000 dilution. Secondary antibody: HRP Goat Anti-Rabbit IgG (H+L) (CABS014) at 1:10000 dilution. Lysates/proteins: 25ug per lane. Blocking buffer: 3% nonfat dry milk in TBST. Detection: ECL Basic Kit (CABM00020). Exposure time: 10s.



Immunohistochemistry of paraffin-embedded mouse retina using RHO antibody (CAB15093) at dilution of 1:200 (40x lens).