

TIMP3 Rabbit Polyclonal Antibody



CAB1511

Product Information

Size:

20uL, 50uL, 100uL, 200uL

Observed MW:

Refer to figures

Calculated MW:

24kDa

Applications:

WB IF

Reactivity:

Human

Antibody Information

Recommended dilutions:

WB 1:500 - 1:2000 IF 1:50 - 1:200

Source:

Rabbit

Isotype:

IgG

Purification:

Affinity purification

Protein Background

This gene belongs to the TIMP gene family. The proteins encoded by this gene family are inhibitors of the matrix metalloproteinases, a group of peptidases involved in degradation of the extracellular matrix (ECM). Expression of this gene is induced in response to mitogenic stimulation and this netrin domain-containing protein is localized to the ECM. Mutations in this gene have been associated with the autosomal dominant disorder Sorsby's fundus dystrophy.

Immunogen information

Gene ID:

7078

Uniprot

P35625

Synonyms:

TIMP3; HSMRK222; K222; K222TA2; SFD

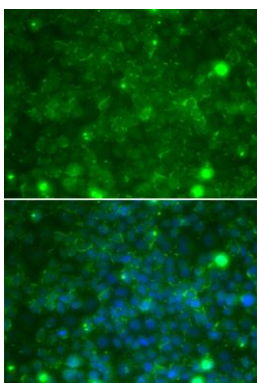
Immunogen:

Recombinant fusion protein containing a sequence corresponding to amino acids 24-211 of human TIMP3 (NP_000353.1).

Storage:

Store at -20°C. Avoid freeze / thaw cycles. Buffer: PBS with 0.02% sodium azide, 50% glycerol, pH7.3.

Product Images



Immunofluorescence analysis of MCF-7 cells using TIMP3 antibody (CAB1511). Blue: DAPI for nuclear staining.