

CXCR4 Rabbit Polyclonal Antibody



CAB15112

Product Information

Size:

20uL, 50uL, 100uL, 200uL

Observed MW:

Calculated MW:

39kDa/40kDa

Applications:

IF

Reactivity:

Human

Antibody Information

Recommended dilutions:

IF 1:50 - 1:200

Source:

Rabbit

Isotype:

IgG

Purification:

Affinity purification

Protein Background

This gene encodes a CXC chemokine receptor specific for stromal cell-derived factor-1. The protein has 7 transmembrane regions and is located on the cell surface. It acts with the CD4 protein to support HIV entry into cells and is also highly expressed in breast cancer cells. Mutations in this gene have been associated with WHIM (warts, hypogammaglobulinemia, infections, and myelokathexis) syndrome. Alternate transcriptional splice variants, encoding different isoforms, have been characterized.

Immunogen information

Gene ID:

7852

Uniprot

P61073

Synonyms:

CD184; D2S201E; FB22; HM89; HSY3RR; LAP-3; LAP3; LCR1; LESTR; NPY3R; NPYR; NPYRL; NPY3R; WHIM; WHIMS; CXCR4

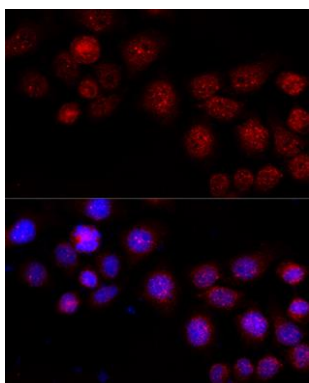
Immunogen:

A synthetic peptide corresponding to a sequence within amino acids 1-100 of human CXCR4 (NP_003458.1).

Storage:

Store at -20°C. Avoid freeze / thaw cycles. Buffer: PBS with 0.02% sodium azide, 50% glycerol, pH7.3.

Product Images



Immunofluorescence analysis of HeLa cells using CXCR4 antibody (CAB15112) at dilution of 1:100 (40x lens). Blue: DAPI for nuclear staining.