

# S1PR4 Rabbit Polyclonal Antibody



CAB15117

---

## Product Information

**Size:**

20uL, 50uL, 100uL, 200uL

**Observed MW:**

50kDa

**Calculated MW:**

41kDa

**Applications:**

WB

**Reactivity:**

Human

## Protein Background

This gene is a member of the endothelial differentiation, G-protein-coupled (EDG) receptor gene family. EDG receptors bind lysophospholipids or lysosphingolipids as ligands, and are involved in cell signalling in many different cell types. This EDG receptor gene is intronless and is specifically expressed in the lymphoid tissue.

## Immunogen information

**Gene ID:**

8698

**Uniprot**

O95977

**Synonyms:**

S1PR4; EDG6; LPC1; S1P4; SLP4

## Antibody Information

**Recommended dilutions:**

WB 1:500 - 1:2000

**Source:**

Rabbit

**Isotype:**

IgG

**Purification:**

Affinity purification

**Immunogen:**

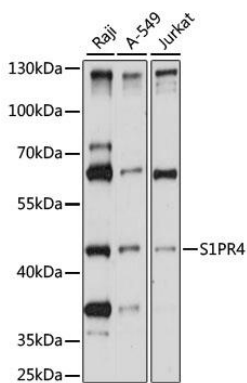
A synthetic peptide corresponding to a sequence within amino acids 300 to the C-terminus of human S1PR4 (NP\_003766.1).

**Storage:**

Store at -20°C. Avoid freeze / thaw cycles. Buffer: PBS with 0.02% sodium azide, 50% glycerol, pH7.3.

## Product Images

---



Western blot analysis of extracts of various cell lines, using S1PR4 antibody (CAB15117) at 1:1000 dilution. Secondary antibody: HRP Goat Anti-Rabbit IgG (H+L) (CABS014) at 1:10000 dilution. Lysates/proteins: 25ug per lane. Blocking buffer: 3% nonfat dry milk in TBST. Detection: ECL Basic Kit (CABM00020). Exposure time: 30s.