

RRAGA Rabbit Polyclonal Antibody



CAB15134

Product Information

Size:

20uL, 50uL, 100uL, 200uL

Observed MW:

33KDa

Calculated MW:

36kDa

Applications:

WB IHC

Reactivity:

Human, Mouse, Rat

Antibody Information

Recommended dilutions:

WB 1:500 - 1:2000 IHC 1:50 - 1:200

Source:

Rabbit

Isotype:

IgG

Purification:

Affinity purification

Protein Background

Immunogen information

Gene ID:

10670

Uniprot

Q7L523

Synonyms:

RRAGA; FIP-1; FIP1; RAGA

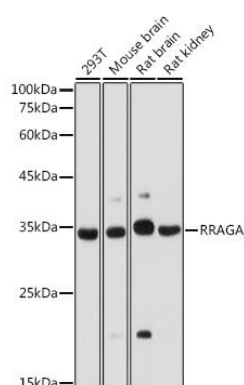
Immunogen:

Recombinant fusion protein containing a sequence corresponding to amino acids 1-160 of human RRAGA (NP_006561.1).

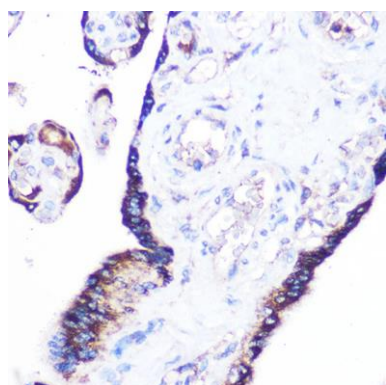
Storage:

Store at -20°C. Avoid freeze / thaw cycles. Buffer: PBS with 0.02% sodium azide, 50% glycerol, pH7.3.

Product Images



Western blot analysis of extracts of various cell lines, using RRAGA antibody (CAB15134) at 1:1000 dilution. Secondary antibody: HRP Goat Anti-Rabbit IgG (H+L) (CABS014) at 1:10000 dilution. Lysates/proteins: 25ug per lane. Blocking buffer: 3% nonfat dry milk in TBST. Detection: ECL Basic Kit (CABM00020). Exposure time: 30s.



Immunohistochemistry of paraffin-embedded human placenta using RRAGA Rabbit pAb (CAB15134) at dilution of 1:100 (40x lens).