

CNTRL Rabbit Polyclonal Antibody



CAB15138

Product Information

Size:

20uL, 50uL, 100uL, 200uL

Observed MW:

280KDa

Calculated MW:

56kDa/116kDa/205kDa/268kDa

Applications:

WB

Reactivity:

Human, Mouse, Rat

Protein Background

This gene encodes a centrosomal protein required for the centrosome to function as a microtubule organizing center. The gene product is also associated with centrosome maturation. One version of stem cell myeloproliferative disorder is the result of a reciprocal translocation between chromosomes 8 and 9, with the breakpoint associated with fibroblast growth factor receptor 1 and centrosomal protein 1.

Immunogen information

Gene ID:

11064

Uniprot

Q7Z7A1

Synonyms:

CNTRL; CEP1; CEP110; FAN; bA165P4.1

Antibody Information

Recommended dilutions:

WB 1:500 - 1:2000

Source:

Rabbit

Isotype:

IgG

Purification:

Affinity purification

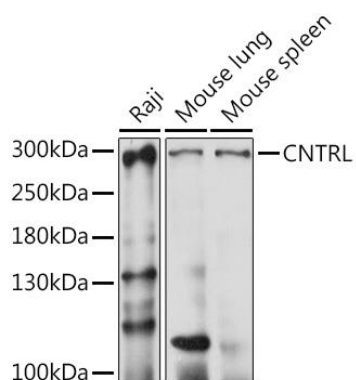
Immunogen:

Recombinant fusion protein containing a sequence corresponding to amino acids 250-500 of human CNTRL (NP_008949.4).

Storage:

Store at -20°C. Avoid freeze / thaw cycles. Buffer: PBS with 0.02% sodium azide, 50% glycerol, pH7.3.

Product Images



Western blot analysis of extracts of various cell lines, using CNTRL antibody (CAB15138) at 1:1000 dilution. Secondary antibody: HRP Goat Anti-Rabbit IgG (H+L) (CABS014) at 1:10000 dilution. Lysates/proteins: 25ug per lane. Blocking buffer: 3% nonfat dry milk in TBST. Detection: ECL Basic Kit (CABM00020). Exposure time: 15s.