

CLDN17 Rabbit Polyclonal Antibody



CAB15151

Product Information

Size:

20uL, 50uL, 100uL, 200uL

Observed MW:

29kDa

Calculated MW:

24kDa

Applications:

WB IHC IF

Reactivity:

Mouse, Rat

Protein Background

This gene encodes a member of the claudin family. Claudins are integral membrane proteins and components of tight junction strands. Tight junction strands serve as a physical barrier to prevent solutes and water from passing freely through the paracellular space between epithelial or endothelial cell sheets, and also play critical roles in maintaining cell polarity and signal transductions. This gene is intronless and is clustered with CLDN8 on chromosome 21q22.11.

Immunogen information

Gene ID:

26285

Uniprot

P56750

Synonyms:

CLDN17

Antibody Information

Recommended dilutions:

WB 1:500 - 1:2000 IHC 1:50
- 1:100 IF 1:50 - 1:100

Source:

Rabbit

Isotype:

IgG

Purification:

Affinity purification

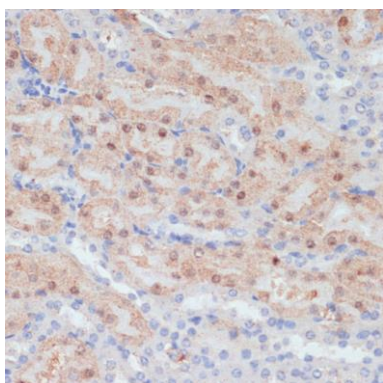
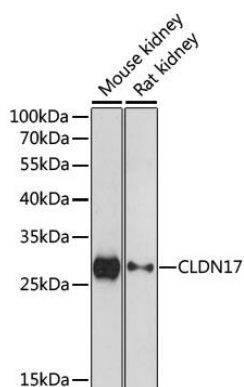
Immunogen:

A synthetic peptide corresponding to a sequence within amino acids 100 to the C-terminus of human CLDN17 (NP_036263.1).

Storage:

Store at -20°C. Avoid freeze / thaw cycles. Buffer: PBS with 0.02% sodium azide, 50% glycerol, pH7.3.

Product Images



Western blot analysis of extracts of various cell lines, using CLDN17 antibody (CAB15151) at 1:1000 dilution. Secondary antibody: HRP Goat Anti-Rabbit IgG (H+L) (CABS014) at 1:10000 dilution. Lysates/proteins: 25ug per lane. Blocking buffer: 3% nonfat dry milk in TBST. Detection: ECL Enhanced Kit (CABM00021). Exposure time: 30s.

Immunohistochemistry of paraffin-embedded mouse kidney using CLDN17 antibody (CAB15151) at dilution of 1:100 (40x lens).