

PYCR2 Rabbit Polyclonal Antibody



CAB15155

Product Information

Size:

20uL, 50uL, 100uL, 200uL

Observed MW:

35kDa

Calculated MW:

33kDa

Applications:

WB IHC IF

Reactivity:

Human, Mouse, Rat

Protein Background

This gene belongs to the pyrroline-5-carboxylate reductase family. The encoded mitochondrial protein catalyzes the conversion of pyrroline-5-carboxylate to proline, which is the last step in proline biosynthesis. Alternatively spliced transcript variants have been described for this gene.

Immunogen information

Gene ID:

29920

Uniprot

Q96C36

Synonyms:

PYCR2; HLD10; P5CR2

Antibody Information

Recommended dilutions:

WB 1:500 - 1:2000 IHC 1:50
- 1:200 IF 1:50 - 1:200

Source:

Rabbit

Isotype:

IgG

Purification:

Affinity purification

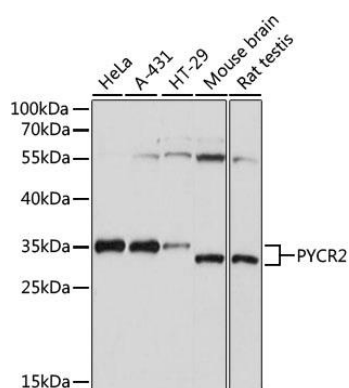
Immunogen:

Recombinant fusion protein containing a sequence corresponding to amino acids 271-320 of human PYCR2 (NP_037460.2).

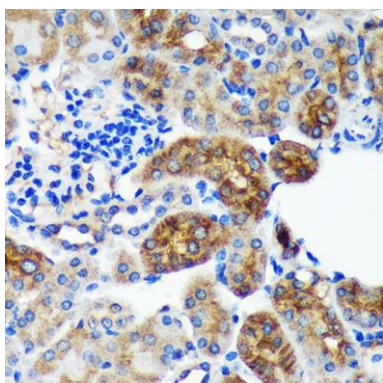
Storage:

Store at -20°C. Avoid freeze / thaw cycles. Buffer: PBS with 0.02% sodium azide, 50% glycerol, pH7.3.

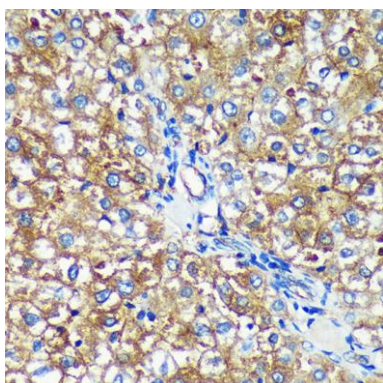
Product Images



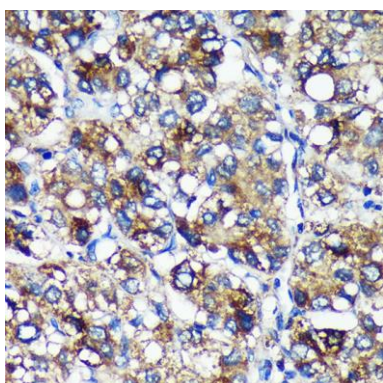
Western blot analysis of extracts of various cell lines, using PYCR2 antibody (CAB15155) at 1:1000 dilution. Secondary antibody: HRP Goat Anti-Rabbit IgG (H+L) (CABS014) at 1:10000 dilution. Lysates/proteins: 25ug per lane. Blocking buffer: 3% nonfat dry milk in TBST. Detection: ECL Basic Kit (CABM00020). Exposure time: 30s.



Immunohistochemistry of paraffin-embedded Mouse kidney using PYCR2 Rabbit pAb (CAB15155) at dilution of 1:100 (40x lens).



Immunohistochemistry of paraffin-embedded Rat liver using PYCR2 Rabbit pAb (CAB15155) at dilution of 1:100 (40x lens).



Immunohistochemistry of paraffin-embedded Human liver cancer using PYCR2 Rabbit pAb (CAB15155) at dilution of 1:100 (40x lens).